



Horizon

Horizon is more than just an elegant glass partition; it is also an economical solution for your working environment. The minimal profile height and seamless connection with other Maars solutions, create a high-quality transparent aesthetic. The uniform profile height, frames and wall joints are creating slim and continuous lines. In other words: a minimalist design with a high-quality finish.



Finishes

- Glass thicknesses:
 - Toughened (tempered): 10 mm / $\frac{3}{8}$ " - 12 mm / $\frac{1}{2}$ "
 - Acoustic Laminated Glass: 10 mm / $\frac{3}{8}$ " - 12 mm / $\frac{1}{2}$ " - 16 mm / $\frac{5}{8}$ "
- Profile heights: 22 mm / $\frac{7}{8}$ " - 35 mm / $1\frac{3}{8}$ "
- Profile material: aluminium
- A single universal profile for multiple glass types

Panel connections

- Transparent silicone tape
- Crystal-clear polymer profile
- Convex/concave connecting glass edges (on request)

Profile connections

- Mitred corner connection (fully glass)
- T-connection, straight (fully glass)
- Virtually seamless transition to wall possible for lalinea, String² and Metaline. 2 mm / $\frac{1}{16}$ " aluminium connecting jamb.



Doors

- Single and double door
- Doorframes:
 - standard slim aluminium Horizon doorframe with 2 hinges
 - alternative doorframes, 82 mm / 3 1/4" or 100 mm / 3 15/16"
- Glass doors:
 - fully glass door: toughened glass or toughened and Acoustic Laminated Glass, 10 mm / 3/8" - 12 mm / 1/2"
 - with aluminium casing: 40 mm / 1 9/16", toughened glass or toughened and Acoustic Laminated Glass, 8 mm / 5/16"
 - Flush glass door: 82 mm / 3 1/4" or 100 mm / 3 15/16"
- Solid doors:
 - steel: 40 mm / 1 9/16" - 82 mm / 3 1/4" - 100 mm / 3 15/16", possibly in combination with glass
 - wood: 40 mm / 1 9/16", possibly in combination with glass
- The doors either full height or transom height with continuous glazing

**With the use of alternative doorframe.*

Sliding door

- Sliding (flat) aluminium doorframe with 'soft close' mechanism
- Slide mechanism connects to ceiling or wall profile
- Glass sliding doors:
 - fully glass door: toughened glass or toughened and Acoustic Laminated Glass, 10 mm / 3/8" - 12 mm / 1/2"
 - with aluminium frame: 40 mm / 1 9/16", toughened glass or toughened and Acoustic Laminated Glass 8 mm / 5/16"
 - Flush glass door: 82 mm / 3 1/4" or 100 mm / 3 15/16"
- Solid sliding doors:
 - steel: 40 mm / 1 9/16" - 82 mm / 3 1/4" - 100 mm / 3 15/16", possibly in combination with glass
 - wood: 40 mm / 1 9/16", possibly in combination with glass
- The sliding doors extend the full height of the wall

Optionally, only one glass module may be placed beside the door in place of the standard two glass modules. View our range of doors to see all available options.

**With the use of alternative doorframe.*



Glass door



Wooden door



Metal door



Sliding door



DIMENSIONS

Wall dimensions

- Maximum height: - 10 mm / $\frac{3}{8}$ " glass:
 - 2700 mm / 8' - 10 $\frac{5}{16}$ "
- 12 mm / $\frac{1}{2}$ " glass:
 - 3200 mm / 10' - 6"
- 16 mm / $\frac{5}{8}$ " glass:
 - 3600 mm / 11' - 9 $\frac{3}{4}$ "
- Maximum module width: 1200 mm / 3' - 11 $\frac{1}{4}$ "
- Maximum door height: 3000 mm / 9' - 10 $\frac{1}{8}$ "
- Maximum door width: 1000 mm / 3' - 3 $\frac{3}{8}$ "
- Maximum door weight: 80 kg

Non-standard dimensions available on request.

INSTALLATION



Integrated electrical and data cables

Only in combination with closed Metaline or String² wall or with alternative doorframe.

Perforated clamp jambs enable wiring to be incorporated into the wall. Demountable panels make the wall easily accessible for retrospective changes.

Tolerance

- 22 mm / $\frac{7}{8}$ " + 22 mm / $\frac{7}{8}$ " profile: +/- 4 mm / $\frac{3}{16}$ "
- 22 mm / $\frac{7}{8}$ " + 35 mm / 1 $\frac{3}{8}$ " profile: +/- 11 mm / $\frac{7}{16}$ "
- 35 mm / 1 $\frac{3}{8}$ " + 35 mm / 1 $\frac{3}{8}$ " profile: +/- 18 mm / $\frac{11}{16}$ "

Glazed elements; 22 mm & 35 mm profiles

Weighted acoustic insulation index complies with EN ISO 717-1:2013.

- 10 mm / $\frac{3}{8}$ " toughened
Rw = 32 dB / STC = 29 dB
- 10,8 mm / $\frac{7}{16}$ " Acoustic Laminated Glass
Rw = 36 dB / STC = 36 dB
- 12 mm / $\frac{1}{2}$ " toughened
Rw = 32 dB / STC = 31 dB
- 12,8 mm / $\frac{1}{2}$ " Acoustic Laminated Glass
Rw = 36 dB / STC = 36 dB
- 16,8 mm / $\frac{11}{16}$ " Acoustic Laminated Glass
Rw = 39 dB / STC = 39 dB

Stability

System complies with:

- ETA Guideline 003 Internal Partition Kits (EN 1990 / EN 1991)
- DIN 4103 up to a height of 3000 mm / 9' - 10 $\frac{1}{8}$ "
 - 10 mm / $\frac{3}{8}$ " toughened
 - 12 mm / $\frac{1}{2}$ " toughened
 - 16 mm / $\frac{5}{8}$ " Acoustic Laminated Glass

Finishes

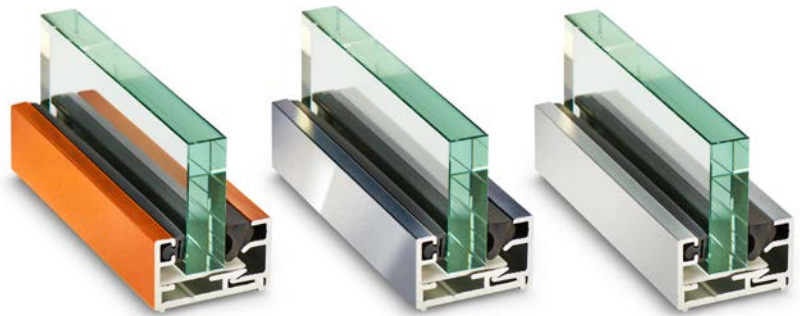
Surface treatment:

For all visible aluminium parts.

- Environmentally-friendly epoxy powder coating, approximately 80µ thick
- Anodised; blank or brushed
- Chrome finish

Colours:

Based on the Maars colour chart.
Other colours available on request.



Glazing:

Multiple options possible, such as sand-blasting, coated or with film. Other forms available on request.

Rubbers:

In black or grey.



LED-contour lighting in Horizon

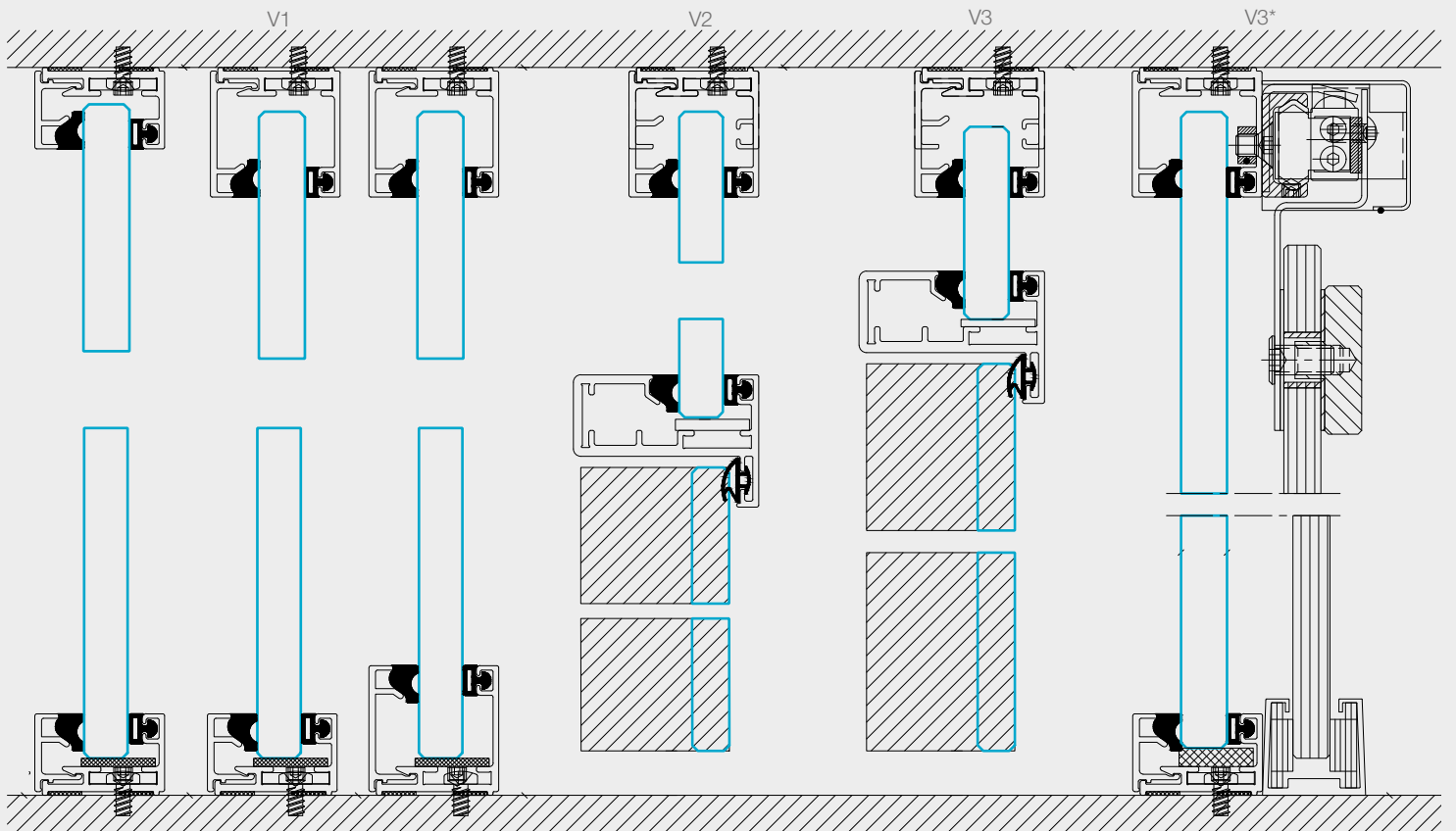
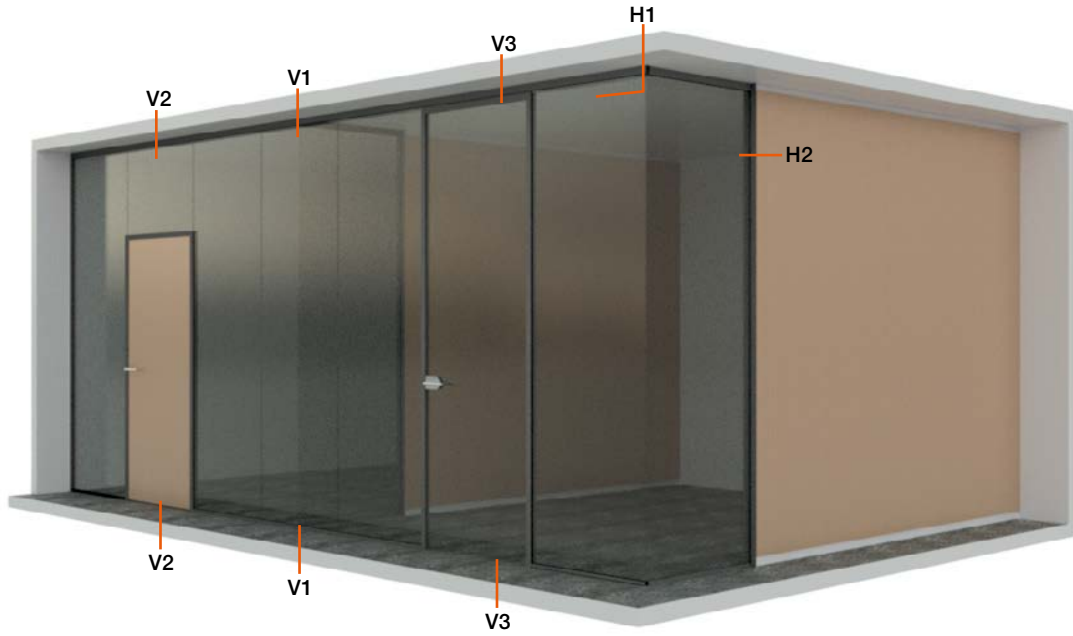
Living options

Only in combination with String².

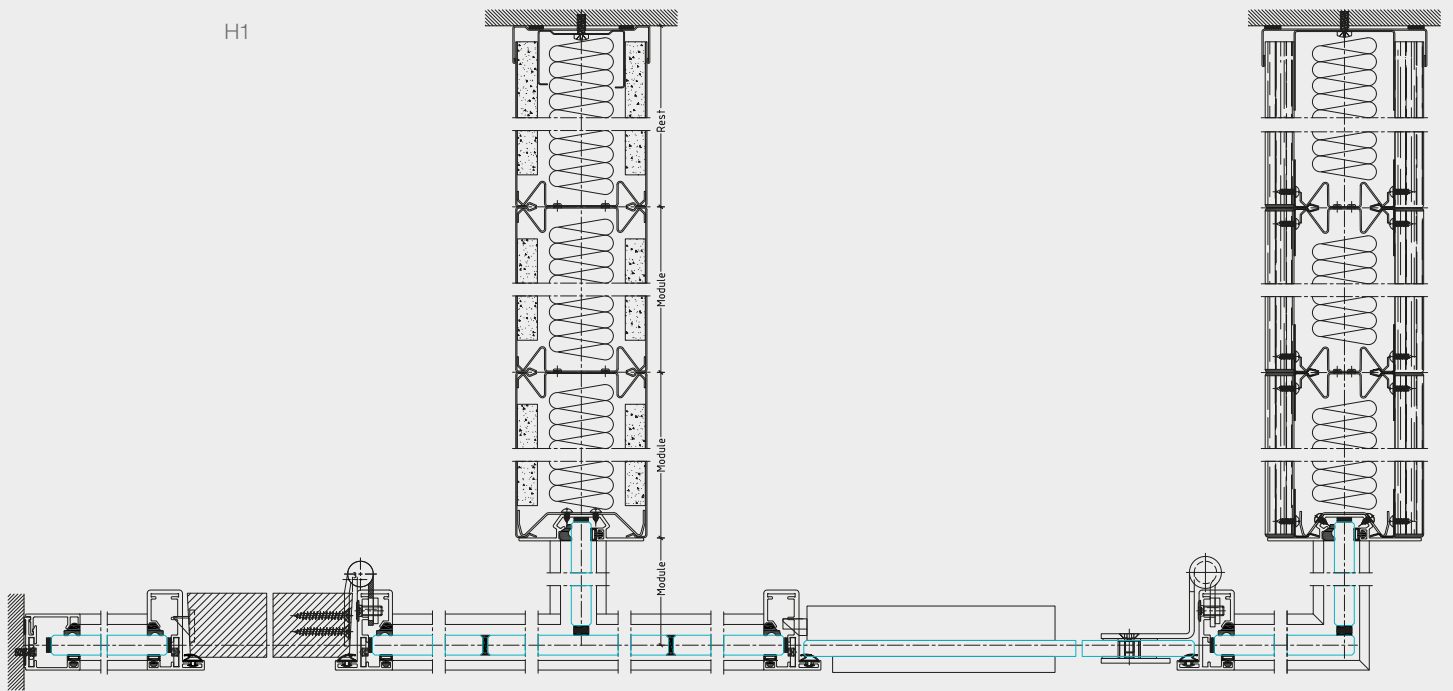
Maars offers a wide range of options which, depending on the wall type, can be integrated into our wall systems. Ventilation jambs, acoustic panels, cupboards, shelf supports, panels with climate control, dynamic light, multimedia, upholstered panels, privacy glass or Maars Magnetics. See: www.maarsmagnetics.com. View the 'Living Options' brochure and www.maarslivingwalls.com for more information.

Technical drawings

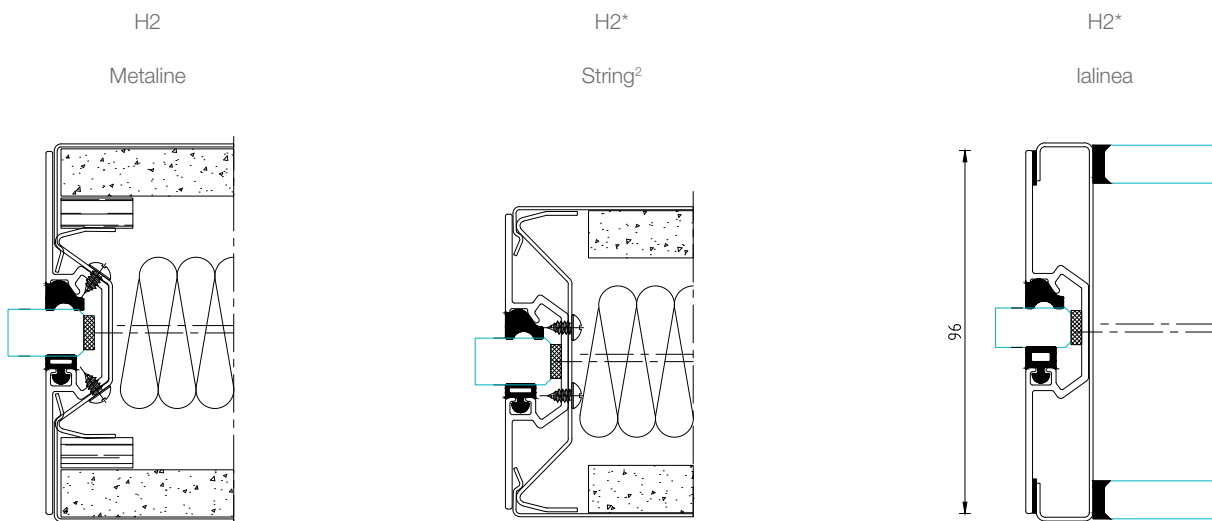
TECHNICAL DETAILS



Corner- and T-connection



Wall connections



Maintenance: consult our website for cleaning and maintenance instructions.

Because we are constantly improving, our products are constantly changing too. For the most recent details, view: www.maarslivingwalls.com