

Technical specifications

DESCRIPTION

Demountable steel and/or particleboard faced partition.

STRUCTURE

- **SOLID ELEMENTS:**
 - Thickness: 100 mm
 - Uprights/Studs: steel sections, 2 x 0,8 mm clinched clamping stud
 - Panels: Steel, galvanized, 0,8 mm on 12,5 mm plasterboard backing
 - 18 mm melamine finished particleboard panels
 - 18 mm veneer finished particleboard panels
 - Fabric covered steel or particleboard panels
 - Internal filling: mineral wool
 - Floor and ceiling U-channels: 1,5 mm galvanized steel sections
- **GLAZED ELEMENTS:**
 - Double glazed panels in 4, 6 or 8 mm thickness in monoblock or bi-block aluminium sections, with beading or flush glass
 - Integrated blinds possible
- **DOOR ELEMENTS:**
 - Doorframe: aluminium or steel frames provided with 3 hinges
 - Door leaves: Wide range of doors from 40 mm or 100 mm thick doors.
Check our doors range for further options

JOINTS

- 0 mm joint
- 5 mm shadow joint
- Combination of joints possible, both horizontally and vertically

FINISHES

- **SURFACE TREATMENT:** for all visible metal parts: environmental friendly epoxy powder coating approx. 80µ thickness.
- **COLOURS:** according to Maars colour chart. Other colours possible after consultation.
- **GLAZING:** a variety of options is available, such as sandblasting, film, painted glass. Other manifestations possible after consultation.

STANDARD DIMENSIONS

- Height: 3100 mm
- Width: solid panels 900/1200 mm, glass 900/1200 mm
Other sizes in height or width after consultation.
- Weight: 32/48 kg/m²

INSTALLATION

- **TOLERANCES:**
 - Floor: +/- 13 mm
 - Ceiling: +/- 13 mm
 - Adjustable floor track for easy adjusting of tolerances
- **CONNECTION:**
All elements are connected by using clamping studs, enabling easy installation and easy disassembly.
- **INTEGRATION OF ELECTRICAL AND DATA SERVICES**
Perforated clamping studs provide access for wiring and other services. Demountable panelling provides easy access for installation afterwards.

CLEANING

Please check our website for our cleaning and maintenance instructions.

LIVING OPTIONS

Maars offers a wide range of options which can be integrated in our partitioning systems, depending on the type of wall. Ventilation studs, sound panels, cupboards, shelving systems, climate control panels, dynamic lighting, multimedia, panels clad with textile, privacy glass and our wide range of Maars Magnetics. See: www.maarsmagnetics.com.
Check the Living Options brochure and www.maarslivingwalls.com for more information.

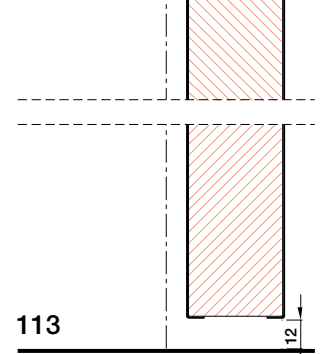
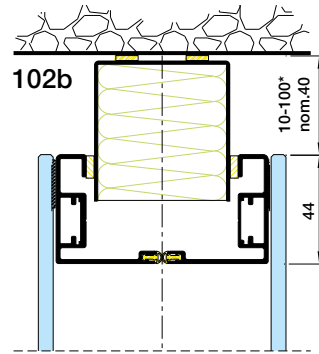
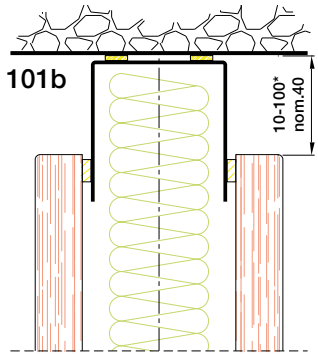
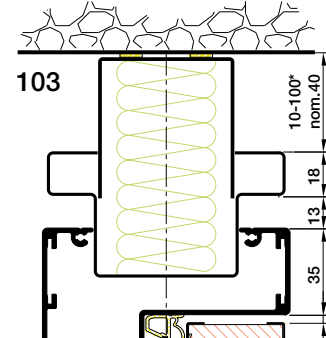
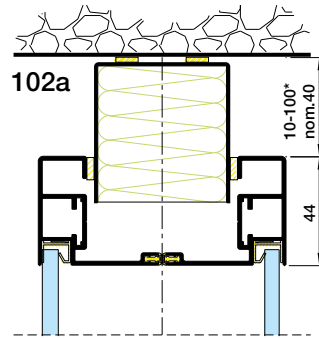
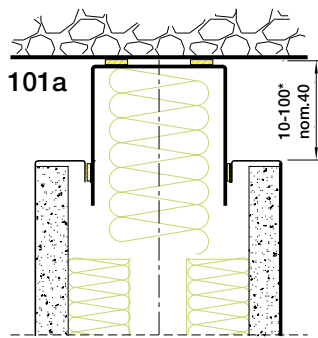
ACOUSTICS

- Weighted sound reduction index to EN ISO 717-1
- Solid, steel: From Rw (C; Ctr)= 50 (-2 ; -6) dB
 - Solid, chipboard: From Rw (C; Ctr)= 41 (-2 ; -6) dB to Rw (C; Ctr)= 50 (-3 ; -8) dB
 - Glazed panels: From Rw (C; Ctr)= 41 (-2 ; -5) dB to Rw (C; Ctr)= 48 (-2 ; -6) dB
 - Door, solid: From Rw (C; Ctr)= 31 (-2 ; -2) dB to Rw (C; Ctr)= 37 (-1 ; -4) dB
 - Door, glazed: Rw (C; Ctr)= 39 (0 ; -2) dB

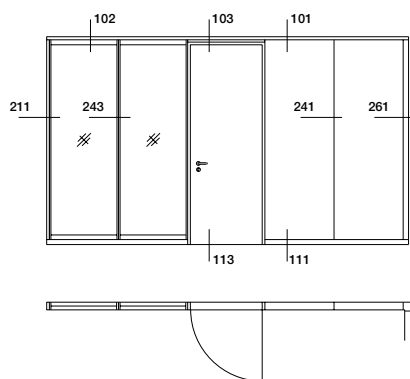
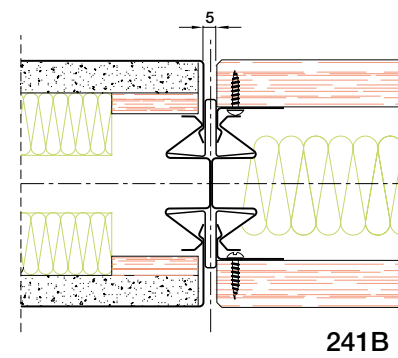
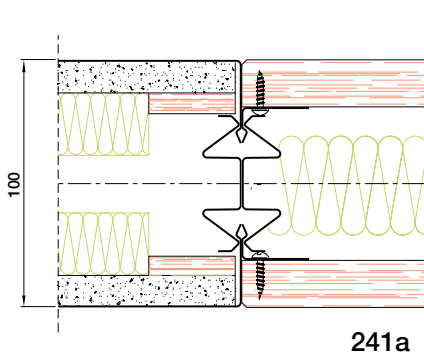
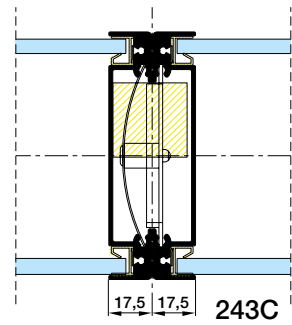
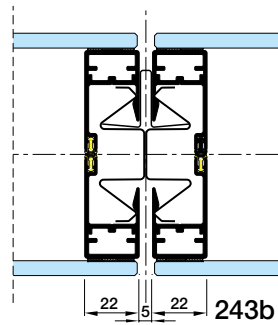
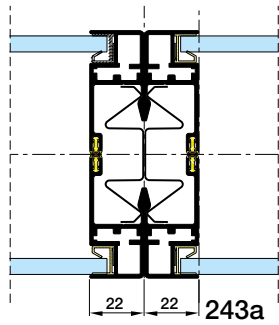
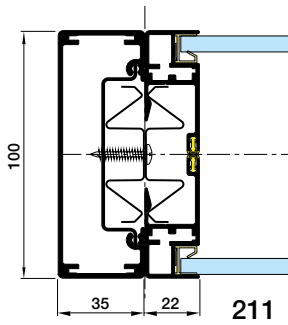
FIRE

- Fire resistance to EN 1363-2, EN 1364-1 and EN 1634-1. Equivalent to BS Standards.
- Solid: EI 120
 - Glazed: EI 60
 - Door: EI 60

Due to our policy of constant improvement our products are subject to change. Please check for the latest details: www.maarslivingwalls.com



*Deviations of nominal sizes are optional. Standard tolerance +/- 13 mm on nominal size



Technical specifications

DESCRIPTION

Demountable steel and/or particleboard faced partition.

STRUCTURE

- **SOLID ELEMENTS:**
 - Thickness: 3¹⁵/₁₆"
 - Uprights/Studs: steel sections, 2 x 1/₁₆" clinched clamping stud
 - Panels: Steel, galvanized, 1/₁₆" on 1/₂" plasterboard backing
 - 1¹/₁₆" melamine finished particleboard panels
 - 1¹/₁₆" veneer finished particleboard panels
 - Fabric covered steel or particleboard panels
 - Internal filling: mineral wool
 - Floor and ceiling U-channels: 1/₁₆" galvanized steel sections
- **GLAZED ELEMENTS:**
 - Double glazed panels in 3/₁₆", 1/₄" or 5/₁₆" thickness in monoblock or bi-block aluminium sections, with beading or flush glass
 - Integrated blinds possible
- **DOOR ELEMENTS:**
 - Doorframe: aluminium or steel frames provided with 3 hinges
 - Door leaves: Wide range of doors from 1⁹/₁₆" or 3¹⁵/₁₆" thick doors.
Check our doors range for further options

JOINTS

- butt joint
- 3/₁₆" shadow joint
- Combination of joints possible, both horizontally and vertically

FINISHES

- **SURFACE TREATMENT:** for all visible metal parts: environmental friendly epoxy powder coating approx. 80µ thickness.
- **COLOURS:** according to Maars colour chart. Other colours possible after consultation.
- **GLAZING:** a variety of options is available, such as sandblasting, film, painted glass. Other manifestations possible after consultation.

STANDARD DIMENSIONS

- Height: 10'-2¹/₁₆"
- Width: solid panels 2'-11⁷/₁₆" / 3'-11 1/₄", glass 2'-11⁷/₁₆" / 3'-11 1/₄"
Other sizes in height or width after consultation.
- Weight: 2.97/4.46 kg/sq ft

INSTALLATION

- **TOLERANCES:**
 - Floor: +/- 1/₂"
 - Ceiling: +/- 1/₂"
 - Adjustable floor track for easy adjusting of tolerances
- **CONNECTION:**
All elements are connected by using clamping studs, enabling easy installation and easy disassembly.
- **INTEGRATION OF ELECTRICAL AND DATA SERVICES**
Perforated clamping studs provide access for wiring and other services. Demountable panelling provides easy access for installation afterwards.

CLEANING

Please check our website for our cleaning and maintenance instructions.

LIVING OPTIONS

Maars offers a wide range of options which can be integrated in our partitioning systems, depending on the type of wall. Ventilation studs, sound panels, cupboards, shelving systems, climate control panels, dynamic lighting, multimedia, panels clad with textile, privacy glass and our wide range of Maars Magnetics. See: www.maarsmagnetics.com.
Check the Living Options brochure and www.maarslivingwalls.com for more information.

ACOUSTICS

Weighted sound reduction index to ASTM E 413-10

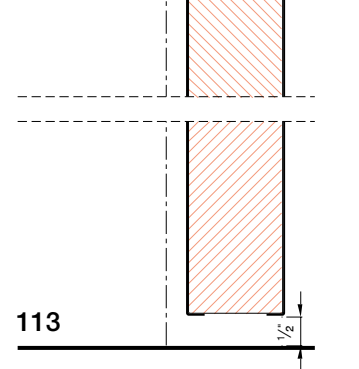
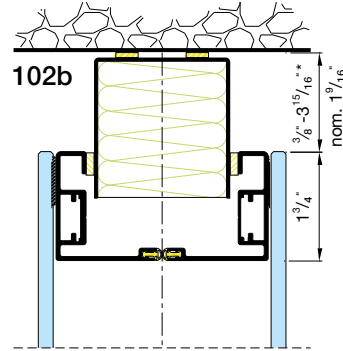
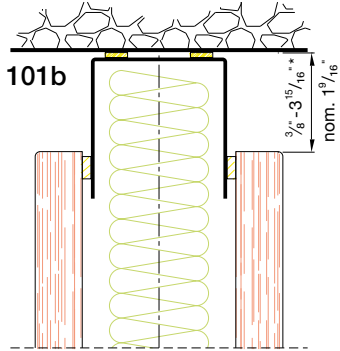
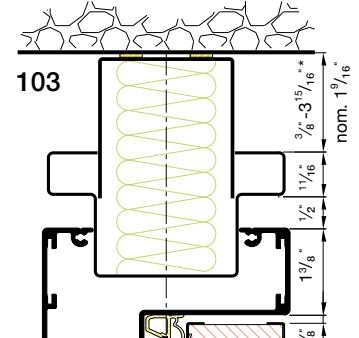
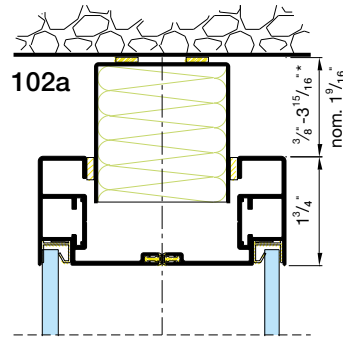
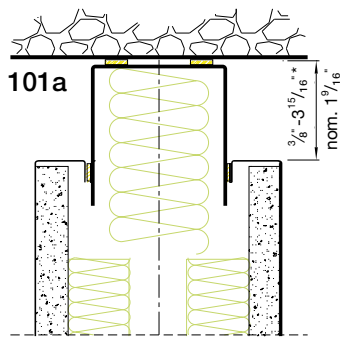
- Solid, steel: Up to STC = 50 dB
- Solid, chipboard: From STC = 41 dB to STC = 50 dB
- Glazed panels: From STC = 40 dB to STC = 48 dB
- Door, solid: From STC = 31 dB to STC = 37 dB
- Door, glazed: Up to STC = 39 dB

FIRE

Fire resistance to EN 1363-2, EN 1364-1 and EN 1634-1. Equivalent to BS Standards.

- Solid: EI 120
- Glazed: EI 60
- Door: EI 60

Due to our policy of constant improvement our products are subject to change. Please check for the latest details: www.maarslivingwalls.com



*Deviations of nominal sizes are optional. Standard tolerance $\pm \frac{1}{2}$ " on nominal size

