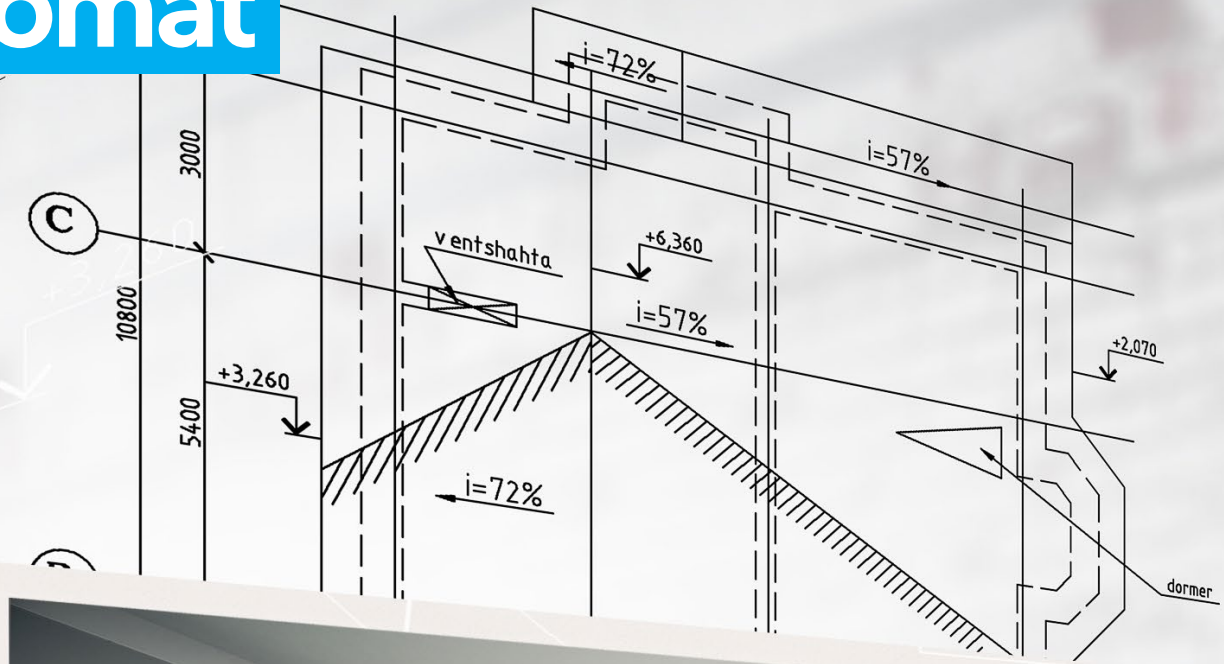


# Promat



## SYSTEMGLAS® Technical Specifiers Guide

Specified for a reason

[www.promat-glass.co.uk](http://www.promat-glass.co.uk)

etex industry

# About Promat UK

Promat UK is an acknowledged leader in the manufacture and supply of high performance insulation, acoustic and passive fire protection products. We are proud to provide a range of products that are trusted, proven and installed worldwide, across a diverse range of industries and applications.

Promat Industry is a key part of the worldwide network of the Etex Group who have a presence in 45 countries, operating 107 production sites and employing more than 15,000 skilled and dedicated professionals. In 2017, group turnover was in excess of €2.9 billion.

Promat's wide range of glass products and systems provide proven and assured levels of fire and smoke protection for fire resistant glazing applications within a wide range of building sectors. Promat's knowledge and expertise provides clients with fully integrated design solutions that deliver required levels of fire protection across refurbished and new build properties. Promat works closely with a wide range of customers, providing comprehensive support and advice including; Glass Specifiers, OEM Partitions, OEM Door companies, Architects and contractors.

## 360° Wheel of Assurance

All passive fire protection is only as strong as its weakest link. Despite being well intentioned allowing specifications which include phrases such as 'similar' or 'equal to' gives rise to various stakeholders in the supply chain putting their perspective on what materials are 'fit for purpose' leading to the potential of inappropriate specifications.

Promat's technical experts provide guidance on the right approach at the design and specification stage, and the system is manufactured in-house to ensure all cutting and processing is completed to the highest standard. Concluding the wheel, Promat inspects the glass on completion to ensure it has been installed in accordance with its recommendations and provides a certificate of conformity for installation.

Promat can provide this assurance because it is in complete control of the design and manufacture process, and it has in-depth knowledge of the installation requirements. This means supply chain risks, such as product substitution or poor installation, can be eliminated.



# Promat SYSTEMGLAS®

SYSTEMGLAS® was the first butt jointed glazed fire protection system to be developed for the UK market. The system can either be framed or butt jointed which eliminates the need for transom and mullions. All solutions provide between 30 and 120 minutes integrity and insulation.

Several perimeter frame options are available including:

- SYSTEMGLAS® Celare; Frame fully concealed in walls, floors and ceilings providing a virtually frameless effect.
- SYSTEMGLAS® Advenerat; Over clad or powder coated frames to complement any building interior.
- SYSTEMGLAS® Ferro; The original steel framed system.
- SYSTEMGLAS® Ligna; Traditional timber framed system.

SYSTEMGLAS® eliminates the need for the heavy and unsightly frames required by conventional systems so architects can achieve unlimited runs of aesthetically appealing glazing without any compromise to the fire resistance.

SYSTEMGLAS® complies with, or exceeds, recognised UK and European standards and regulations relating to passive fire protection. The use of fully trained Approved Fabricators to install the system ensures complete peace of mind.

Butt jointed glazing for maximum light transmission and contemporary appearance

Aesthetically pleasing un-intrusive corner joints available

Beading and setting blocks also provided by Promat UK as part of the package

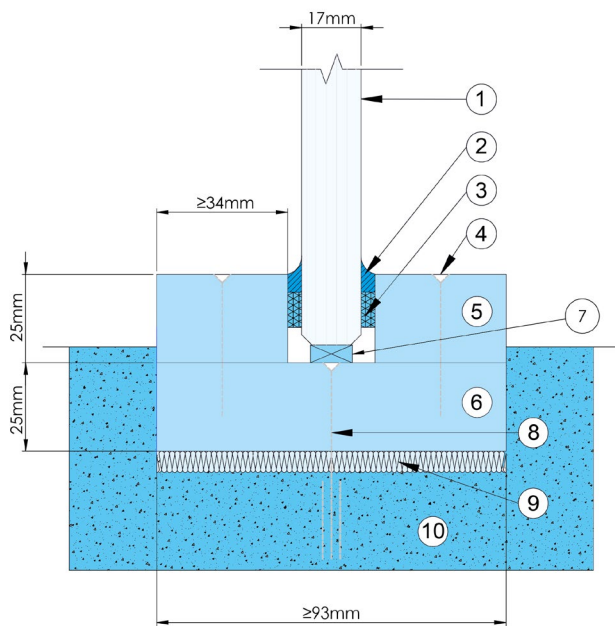


A variety of framing options available including fully concealed (SYSTEMGLAS® Celare), Over clad (SYSTEMGLAS® Advenerat), Timber (SYSTEMGLAS® Ligna) and steel (SYSTEMGLAS® Ferro)

Standard systems fire rated up to 30 minutes or 60 minutes Integrity and Insulation (EI). 90 and 120 minute systems available on request.

# SYSTEMGLAS® Celare EI30

SYSTEMGLAS® Celare is a unique system providing the ultimate solution in maximising light transmission without compromising fire safety. The Promat fire resistant PROMATECT® H Calcium Silicate perimeter framing system is completely hidden in the structures of the wall, floor and ceiling creating an aesthetically pleasing concealed solution. Whilst the system can be completely hidden in the floor, Promat recommend leaving a small threshold to avoid damage to the glass from vacuum cleaners.



- 1 SYSTEMGLAS®
- 2 SYSTEMGLAS® Silicone sealant
- 3 Self-adhesive neoprene glazing tape, 10x3mm
- 4 Bead fixings, steel screws, 3.5x45mm at maximum 300mm centres
- 5 Glazing Beads, PROMATECT® H 25mm thick x >34mm wide
- 6 Perimeter frame, PROMATECT® H 25mm thick x >93mm wide
- 7 PROMATECT® H or hardwood setting blocks, 6mm thick x <17mm wide x 150mm long
- 8 Masonry fixing, steel anchor or similar
- 9 Compressed rock fibre
- 10 Solid wall, floor or soffit with fire resistance equal to, or greater than that of the glazing system

## SYSTEMGLAS® Celare EI30 Modular Dimensions (Larger sizes available on request)

	Height (mm)	Width (mm)
<b>VERTICAL</b>	3000	1000
<b>HORIZONTAL</b>	1750	3150

### EI30 Glazing Specification

- Outlined above. Contact us for larger sizes
- 39 dBRw sound reduction
- 2B2 safety rating
- 40kg/m<sup>2</sup>
- 84% light transmission (internal grade)

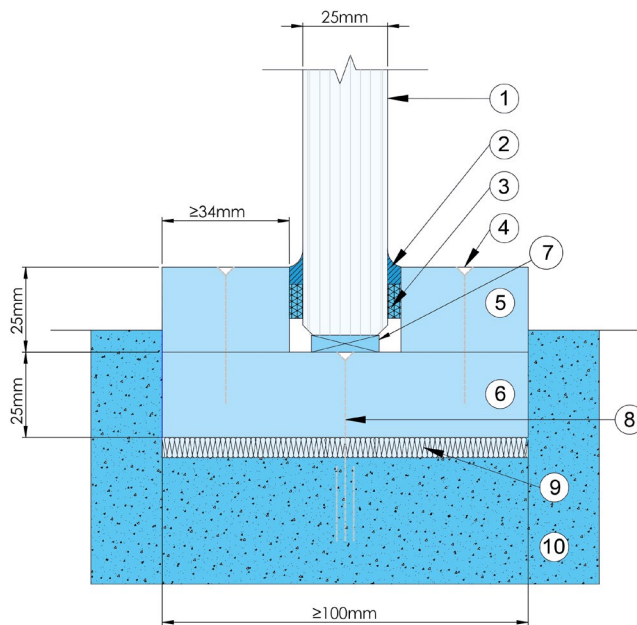
### Additional Glass Options

- Low Iron available
- External grade for UV stability
- Screen manifestation
- Enhanced acoustics (using EG products)
- 60, 90 & 120 minute glass available on request



# SYSTEMGLAS® Celare EI60

SYSTEMGLAS® Celare is a unique system providing the ultimate solution in maximising light transmission without compromising fire safety. The Promat fire resistant PROMATECT® H Calcium Silicate perimeter framing system is completely hidden in the structures of the wall, floor and ceiling creating an aesthetically pleasing concealed solution. Whilst the system can be completely hidden in the floor, Promat recommend leaving a small threshold to avoid damage to the glass from vacuum cleaners.



- 1 SYSTEMGLAS®
- 2 SYSTEMGLAS® Silicone sealant
- 3 Self-adhesive neoprene glazing tape, 10x3mm
- 4 Bead fixings, steel screws, 3.5x45mm at maximum 300mm centres
- 5 Glazing Beads, PROMATECT® H 25mm thick x >34mm wide
- 6 Perimeter frame, PROMATECT® H 25mm thick x >106mm wide
- 7 PROMATECT® H or hardwood setting blocks, 6mm thick x <25mm wide x 150mm long
- 8 Masonry fixing, steel anchor or similar
- 9 Compressed rock fibre
- 10 Solid wall, floor or soffit with fire resistance equal to, or greater than that of the glazing system

## SYSTEMGLAS® Celare EI60 Modular Dimensions (Larger sizes available on request)

	Height (mm)	Width (mm)
<b>VERTICAL</b>	3000	1000
<b>HORIZONTAL</b>	1576	3051

### EI60 Glazing Specification

- Outlined above. Contact us for larger sizes
- 40 dBRw sound reduction
- 1B1 safety rating
- 60kg/m<sup>2</sup>
- 81% light transmission (internal grade)

### Additional Glass Options

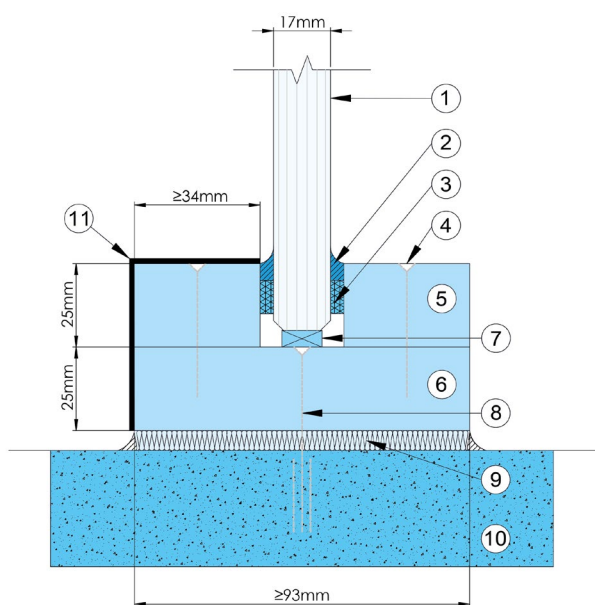
- Low Iron available
- External grade for UV stability
- Screen manifestation
- Enhanced acoustics (using EG products)
- 30, 90 & 120 minute glass available on request

# SYSTEMGLAS® Advenerat EI30

SYSTEMGLAS® Advenerat is an innovative system specifically designed to complement the decor of any building. The Promat fire resistant PROMATECT® H Calcium Silicate perimeter framing system can be over clad, painted or powder coated to provide a variety of styles and effects. Steel over clad trims are supplied by Promat in three different colours creating the effect of a full steel frame system.

Standard over clad colour options - Other colours available on request

- Grey (RAL9006)
- White (RAL9010)
- Black (RAL9005)



- 1 SYSTEMGLAS®
- 2 SYSTEMGLAS® Silicone sealant
- 3 Self-adhesive neoprene glazing tape, 10x3mm
- 4 Bead fixings, steel screws, 3.5x45mm at maximum 300mm centres
- 5 Glazing Beads, PROMATECT® H 25mm thick x >34mm wide
- 6 Perimeter frame, PROMATECT® H 25mm thick x >93mm wide
- 7 PROMATECT® H or hardwood setting blocks, 6mm thick x <17mm wide x 150mm long
- 8 Masonry fixing, steel anchor or similar
- 9 Compressed rock fibre
- 10 Solid wall, floor or soffit with fire resistance equal to, or greater than that of the glazing system
- 11 Optional steel cladding

## SYSTEMGLAS® Advenerat EI30 Modular Dimensions (Larger sizes available on request)

	Height (mm)	Width (mm)
<b>VERTICAL</b>	3000	1000
<b>HORIZONTAL</b>	1750	3150

### EI30 Glazing Specification

- Outlined above. Contact us for larger sizes
- 39 dBRw sound reduction
- 2B2 safety rating
- 40kg/m<sup>2</sup>
- 84% light transmission (internal grade)

### Additional Glass Options

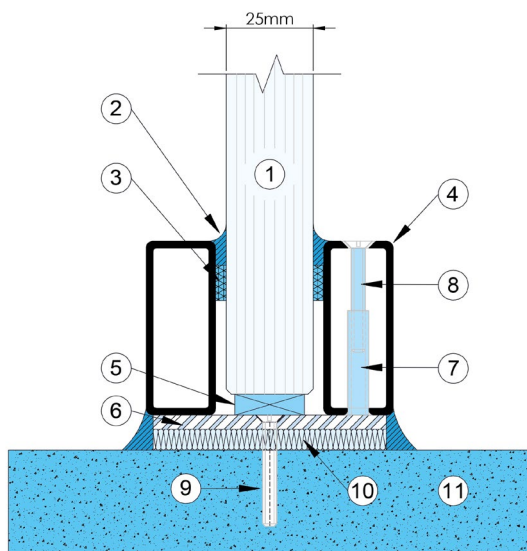
- Low Iron available
- External grade for UV stability
- Screen manifestation
- Enhanced acoustics (using EG products)
- 60, 90 & 120 minute glass available on request



# SYSTEMGLAS® Ferro EI30

SYSTEMGLAS® Ferro is the original butt jointed fire rated system from Promat and is the most popular product in the range. Launched over 20 years ago, this stainless steel system has been used on countless prestigious projects throughout Western Europe. The stainless steel frame in conjunction with the butt jointed glass offers a contemporary feel and maximises light transmission throughout the building.

The slimline 50mm stainless steel perimeter framing is tested up to large sizes and an unlimited number of horizontal panels can be clear butt jointed for a continuous glazed screen.



- 1 SYSTEMGLAS®
- 2 SYSTEMGLAS® Silicone sealant
- 3 Self-adhesive neoprene glazing tape, 10x3mm
- 4 50x20x2mm tubular steel sections
- 5 PROMATECT® H or hardwood setting blocks, 5mm thick
- 6 40x57x5mm flat steel. Welded to tubular steel sections
- 7 M6 threaded brace, welded to flat steel
- 8 Steel screw, 6x30mm
- 9 Masonry fitting, steel anchor or similar
- 10 Compressed wall fibre
- 11 Solid wall, floor or soffit with fire resistance equal to, or greater than that of the glazing system

## SYSTEMGLAS® Ferro EI30 Modular Dimensions (Larger sizes available on request)

	Height (mm)	Width (mm)
<b>VERTICAL</b>	3000	1000
<b>HORIZONTAL</b>	1750	3150

### EI30 Glazing Specification

- Outlined above. Contact us for larger sizes
- 39 dBRw Sound reduction
- 2B2 Safety Rating
- 40kg / m<sup>2</sup>
- 84% light transmission (internal grade)

### Additional Glass Options

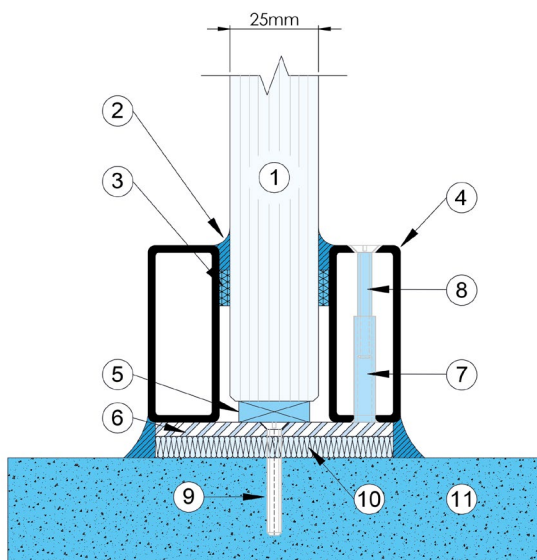
- Low Iron available
- External grade for UV stability
- Screen Manifestation
- Enhanced Acoustics (using EG Products)
- 60, 90 & 120 minute glass available on request



# SYSTEMGLAS® Ferro EI60

SYSTEMGLAS® Ferro is the original butt jointed fire rated system from Promat and is the most popular product in the range. Launched over 20 years ago, this stainless steel system has been used on countless prestigious projects throughout Western Europe. The stainless steel frame in conjunction with the butt jointed glass offers a contemporary feel and maximises light transmission throughout the building.

The slimline 50mm stainless steel perimeter framing is tested up to large sizes and an unlimited number of horizontal panels can be clear butt jointed for a continuous glazed screen.



- 1 SYSTEMGLAS®
- 2 SYSTEMGLAS® Silicone sealant
- 3 Self-adhesive neoprene glazing tape, 10x3mm
- 4 50x20x2mm tubular steel sections
- 5 PROMATECT® H or hardwood setting blocks, 5mm thick
- 6 40x57x5mm flat steel. Welded to tubular steel sections
- 7 M6 threaded brace, welded to flat steel
- 8 Steel screw, 6x30mm
- 9 Masonry fitting, steel anchor or similar
- 10 Compressed wall fibre
- 11 Solid wall, floor or soffit with fire resistance equal to, or greater than that of the glazing system

## SYSTEMGLAS® Ferro EI60 Modular Dimensions (Larger sizes available on request)

	Height (mm)	Width (mm)
VERTICAL	3000	1000

### EI60 Glazing Specification

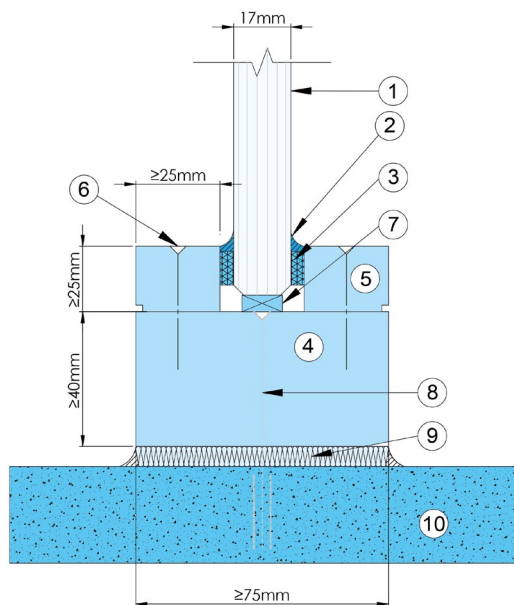
- Outlined above. Contact us for larger sizes
- 40 dBRw Sound reduction
- 1B1 Safety Rating
- 60kg / m<sup>2</sup>
- 81% light transmission (internal grade)

### Additional Glass Options

- Low Iron available
- External grade for UV stability
- Screen Manifestation
- Enhanced Acoustics (using EG Products)
- 30, 90 & 120 minute glass available on request

# SYSTEMGLAS® Ligna EI30

SYSTEMGLAS® Ligna is specified to provide the aesthetic look of timber to match contemporary or traditional environments. Suitable for combination with tested timber doorsets, this solution combines the natural beauty of a timber product with the functionality of a fire protection system in critical areas.



- 1 SYSTEMGLAS®
- 2 SYSTEMGLAS® Silicone sealant
- 3 Self-adhesive neoprene glazing tape, 10x3mm
- 4 Hardwood timber frame (minimum 500kg/m<sup>3</sup>)
- 5 Hardwood beads (minimum 500kg/m<sup>3</sup>)
- 6 Steel screws, 4.5x40mm at maximum 400mm centres
- 7 PROMATECT® H or hardwood setting blocks, 5mm thick
- 8 Masonry fitting, steel anchor or similar
- 9 Compressed wall fibre
- 10 Solid wall, floor or soffit with fire resistance equal to, or greater than that of the glazing system

## SYSTEMGLAS® Ligna EI30 Modular Dimensions (Larger sizes available on request)

	Height (mm)	Width (mm)
<b>VERTICAL</b>	3000	1000
<b>HORIZONTAL</b>	1750	3150

### EI30 Glazing Specification

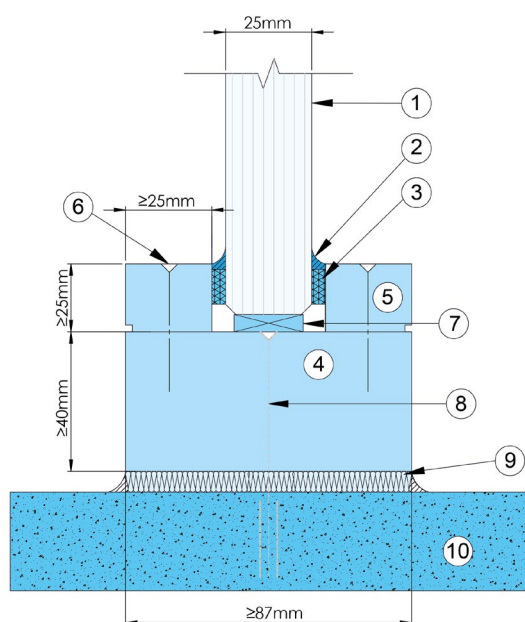
- Outlined above. Contact us for larger sizes
- 39 dBRw Sound reduction
- 2B2 Safety Rating
- 40kg / m<sup>2</sup>
- 84% light transmission (internal grade)

### Additional Glass Options

- Low Iron available
- External grade for UV stability
- Screen Manifestation
- Enhanced Acoustics (using EG Products)
- 60, 90 & 120 minute glass available on request

# SYSTEMGLAS® Ligna EI60

SYSTEMGLAS® Ligna is specified to provide the aesthetic look of timber to match contemporary or traditional environments. Suitable for combination with tested timber doorsets, this solution combines the natural beauty of a timber product with the functionality of a fire protection system in critical areas.



- 1 SYSTEMGLAS®
- 2 SYSTEMGLAS® Silicone sealant
- 3 Self-adhesive neoprene glazing tape, 10x3mm
- 4 Hardwood timber frame (minimum 500kg/m<sup>3</sup>)
- 5 Hardwood beads (minimum 500kg/m<sup>3</sup>)
- 6 PROMATECT® H or hardwood setting blocks, 5mm thick
- 7 Steel screws, 5x40mm at 400mm centres
- 8 Masonry fitting, steel anchor or similar
- 9 Compressed rock fibre
- 10 Solid wall, floor or soffit with fire resistance equal to, or greater than that of the glazing system

## SYSTEMGLAS® Ligna EI60 Modular Dimensions (Larger sizes available on request)

	Height (mm)	Width (mm)
<b>VERTICAL</b>	3000	1000

### EI60 Glazing Specification

- Outlined above. Contact us for larger sizes
- 40 dBRw Sound reduction
- 1B1 Safety Rating
- 60kg / m<sup>2</sup>
- 81% light transmission (internal grade)

### Additional Glass Options

- Low Iron available
- External grade for UV stability
- Screen Manifestation
- Enhanced Acoustics (using EG Products)
- 30, 90 & 120 minute glass available on request

## Benefit from 60 years of experience

Promat is the leading reference and pioneer in the fields of **fire, thermal, and acoustic protection**. With a strong global presence and 60 years of experience, innovation and know-how, Promat is the first choice for your insulation and fireproofing requirements in the fuel cells industry.

## Global sales & technical support

Promat has more than **1,300 employees** spread over **13 factories, 40 sales offices** and **2 innovation centres** worldwide. The company is part of Etex Industry, a division of the Belgian industrial group Etex, specialised in the manufacturing and selling of construction materials.

## Our sales offices

Australia, Austria, Belgium, Brazil, Bulgaria, China, Chile, Colombia, Czech Republic, Denmark, France, Germany, Hong Kong, Hungary, India, Ireland, Italy, Japan, Kazakhstan, Lithuania, Malaysia, The Netherlands, Peru, Poland, Romania, Russia, Serbia, Singapore, Slovakia, South Africa, Slovenia, South Korea, Spain, Switzerland, UAE, UK, USA.

## Contact us now

Contact us with your requirements. We look forward to advising you on your projects.

Promat UK Ltd • B1 The Innovation Centre • Heywood Distribution Park • Pilsworth Road • Heywood • OL10 2TS  
+44 (0)800 588 4444 • sales@promat.co.uk

[www.promat-glass.co.uk](http://www.promat-glass.co.uk)