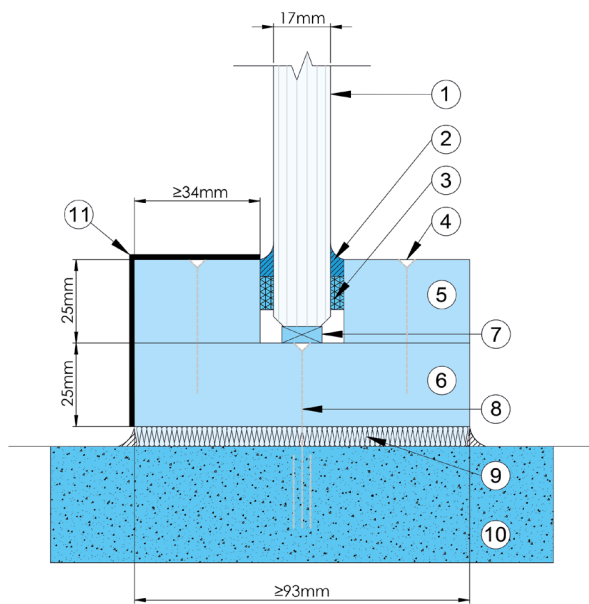


## SYSTEMGLAS® Advenerat EI30

SYSTEMGLAS® Advenerat is an innovative system specifically designed to complement the decor of any building. The Promat fire resistant PROMATECT® H Calcium Silicate perimeter framing system can be over clad, painted or powder coated to provide a variety of styles and effects. Steel over clad trims are supplied by Promat in three different colours creating the effect of a full steel frame system.

Standard over clad colour options - Other colours available on request

- Grey (RAL9006)
- White (RAL9010)
- Black (RAL9005)



- 1 SYSTEMGLAS®
- 2 SYSTEMGLAS® Silicone sealant
- 3 Self-adhesive neoprene glazing tape, 10x3mm
- 4 Bead fixings, steel screws, 3.5x45mm at maximum 300mm centres
- 5 Glazing Beads, PROMATECT® H 25mm thick x >34mm wide
- 6 Perimeter frame, PROMATECT® H 25mm thick x >93mm wide
- 7 PROMATECT® H or hardwood setting blocks, 6mm thick x <17mm wide x 150mm long
- 8 Masonry fixing, steel anchor or similar
- 9 Compressed rock fibre
- 10 Solid wall, floor or soffit with fire resistance equal to, or greater than that of the glazing system
- 11 Optional steel cladding

### SYSTEMGLAS® Advenerat EI30 Modular Dimensions (Larger sizes available on request)

	Height (mm)	Width (mm)
<b>VERTICAL</b>	3000	1000
<b>HORIZONTAL</b>	1750	3150

### EI30 Glazing Specification

- Outlined above. Contact us for larger sizes
- 39 dBRw sound reduction
- 2B2 safety rating
- 40kg/m<sup>2</sup>
- 84% light transmission (internal grade)

### Additional Glass Options

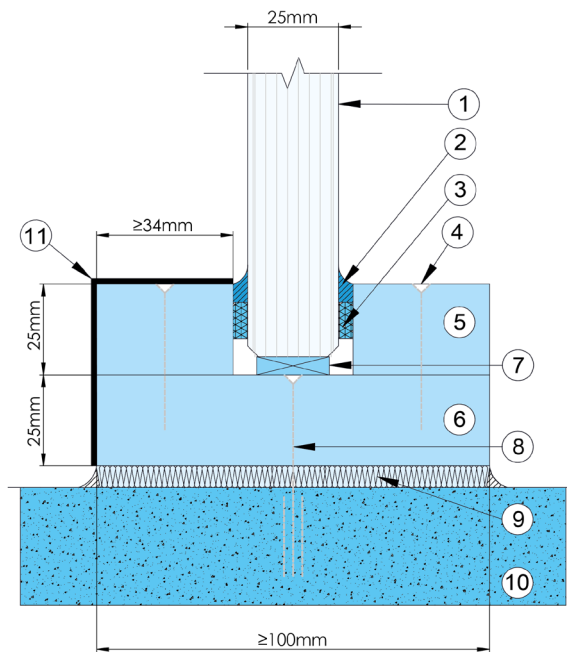
- Low Iron available
- External grade for UV stability
- Screen manifestation
- Enhanced acoustics (using EG products)
- 60, 90 & 120 minute glass available on request

## SYSTEMGLAS® Advenerat EI60

SYSTEMGLAS® Advenerat is an innovative system specifically designed to complement the decor of any building. The Promat fire resistant PROMATECT® H Calcium Silicate perimeter framing system can be over clad, painted or powder coated to provide a variety of styles and effects. Steel over clad trims are supplied by Promat in three different colours creating the effect of a full steel frame system.

Standard over clad colour options - Other colours available on request

- Grey (RAL9006)
- White (RAL9010)
- Black (RAL9005)



- 1 SYSTEMGLAS®
- 2 SYSTEMGLAS® Silicone sealant
- 3 Self-adhesive neoprene glazing tape, 10x3mm
- 4 Bead fixings, steel screws, 3.5x45mm at maximum 300mm centres
- 5 Glazing Beads, PROMATECT® H 25mm thick x >34mm wide
- 6 Perimeter frame, PROMATECT® H 25mm thick x >106mm wide
- 7 PROMATECT® H or hardwood setting blocks, 6mm thick x <25mm wide x 150mm long
- 8 Masonry fixing, steel anchor or similar
- 9 Compressed rock fibre
- 10 Solid wall, floor or soffit with fire resistance equal to, or greater than that of the glazing system
- 11 Optional steel cladding

### SYSTEMGLAS® Advenerat EI60 Modular Dimensions (Larger sizes available on request)

	Height (mm)	Width (mm)
<b>VERTICAL</b>	3000	1000
<b>HORIZONTAL</b>	1576	3051

### EI60 Glazing Specification

- Outlined above. Contact us for larger sizes
- 40 dBRw sound reduction
- 1B1 safety rating
- 60kg/m<sup>2</sup>
- 81% light transmission (internal grade)

### Additional Glass Options

- Low Iron available
- External grade for UV stability
- Screen manifestation
- Enhanced acoustics (using EG products)
- 30, 90 & 120 minute glass available on request