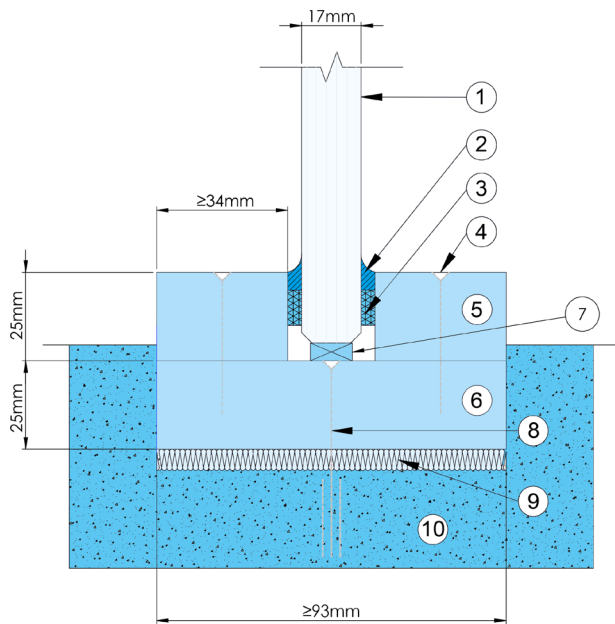


SYSTEMGLAS® Celare EI30

SYSTEMGLAS® Celare is a unique system providing the ultimate solution in maximising light transmission without compromising fire safety. The Promat fire resistant PROMATECT® H Calcium Silicate perimeter framing system is completely hidden in the structures of the wall, floor and ceiling creating an aesthetically pleasing concealed solution. Whilst the system can be completely hidden in the floor, Promat recommend leaving a small threshold to avoid damage to the glass from vacuum cleaners.



- 1 SYSTEMGLAS®
- 2 SYSTEMGLAS® Silicone sealant
- 3 Self-adhesive neoprene glazing tape, 10x3mm
- 4 Bead fixings, steel screws, 3.5x45mm at maximum 300mm centres
- 5 Glazing Beads, PROMATECT® H 25mm thick x >34mm wide
- 6 Perimeter frame, PROMATECT® H 25mm thick x >93mm wide
- 7 PROMATECT® H or hardwood setting blocks, 6mm thick x <17mm wide x 150mm long
- 8 Masonry fixing, steel anchor or similar
- 9 Compressed rock fibre
- 10 Solid wall, floor or soffit with fire resistance equal to, or greater than that of the glazing system

SYSTEMGLAS® Celare EI30 Modular Dimensions (Larger sizes available on request)

	Height (mm)	Width (mm)
VERTICAL	3000	1000
HORIZONTAL	1750	3150

EI30 Glazing Specification

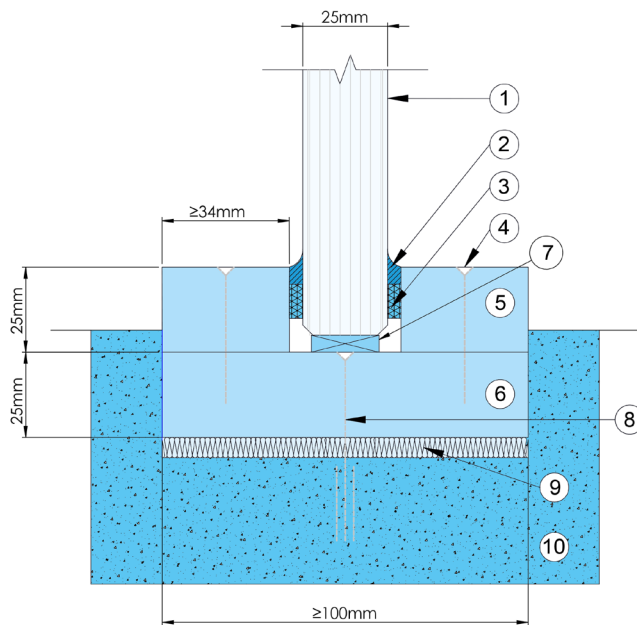
- Outlined above. Contact us for larger sizes
- 39 dBRw sound reduction
- 2B2 safety rating
- 40kg/m²
- 84% light transmission (internal grade)

Additional Glass Options

- Low Iron available
- External grade for UV stability
- Screen manifestation
- Enhanced acoustics (using EG products)
- 60, 90 & 120 minute glass available on request

SYSTEMGLAS® Celare EI60

SYSTEMGLAS® Celare is a unique system providing the ultimate solution in maximising light transmission without compromising fire safety. The Promat fire resistant PROMATECT® H Calcium Silicate perimeter framing system is completely hidden in the structures of the wall, floor and ceiling creating an aesthetically pleasing concealed solution. Whilst the system can be completely hidden in the floor, Promat recommend leaving a small threshold to avoid damage to the glass from vacuum cleaners.



- 1 SYSTEMGLAS®
- 2 SYSTEMGLAS® Silicone sealant
- 3 Self-adhesive neoprene glazing tape, 10x3mm
- 4 Bead fixings, steel screws, 3.5x45mm at maximum 300mm centres
- 5 Glazing Beads, PROMATECT® H 25mm thick x >34mm wide
- 6 Perimeter frame, PROMATECT® H 25mm thick x >106mm wide
- 7 PROMATECT® H or hardwood setting blocks, 6mm thick x <25mm wide x 150mm long
- 8 Masonry fixing, steel anchor or similar
- 9 Compressed rock fibre
- 10 Solid wall, floor or soffit with fire resistance equal to, or greater than that of the glazing system

SYSTEMGLAS® Celare EI60 Modular Dimensions (Larger sizes available on request)

	Height (mm)	Width (mm)
VERTICAL	3000	1000
HORIZONTAL	1576	3051

EI60 Glazing Specification

- Outlined above. Contact us for larger sizes
- 40 dBRw sound reduction
- 1B1 safety rating
- 60kg/m²
- 81% light transmission (internal grade)

Additional Glass Options

- Low Iron available
- External grade for UV stability
- Screen manifestation
- Enhanced acoustics (using EG products)
- 30, 90 & 120 minute glass available on request