

KEYLESSH3

THE PERFECT HASP

EXPERIENCE THE PERFECT LOCKS

SIMPLY PERFECT. PERFECTLY SIMPLE.

Our hasp lock is perfect for shared or assigned use in any wet or dry environment.

With no batteries to change, no plastic parts and no wires, our locks are maintenance free resulting in zero operating expenses and two LEED V4 credits

Standard, premium and custom finishes as well as ADA versions all backed by personal service and the best 1-year comprehensive warranty

OUR CLIENTS



amazon

BOEING

Capital One



Coca-Cola



EQUINOX

facebook



Google

HYATT



LIFETIME
FITNESS



Mercedes-Benz



PEPSICO



REBEL



VISA



KEYLESSH3

ARCHITECTURAL SPECIFICATIONS



PART NUMBER:
KEYLESSH3-SN
KEYLESSH3-SN-ADA

STANDARD FINISH:
SATIN NICKEL



PART NUMBER:
KEYLESSH3-MB
KEYLESSH3-MB-ADA

PREMIUM FINISH:
MATTE BLACK
MUNSELL N2/



PART NUMBER:
KEYLESSH3-MW
KEYLESSH3-MW-ADA

PREMIUM FINISH:
MATTE WHITE
MUNSELL N9/



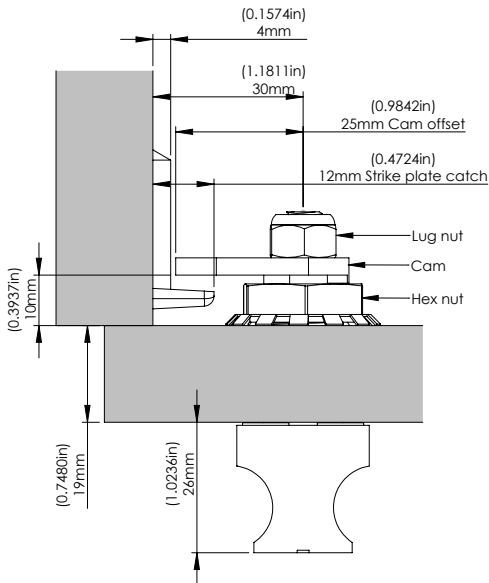
PART NUMBER:
KEYLESSH3-SG
KEYLESSH3-SG-ADA

PREMIUM FINISH:
SATIN GOLD
PANTONE #871C

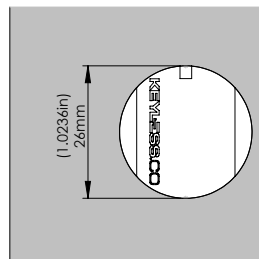
10% color discrepancy and custom pricing options apply.

- Compatible with wood, glass, plastic, phenolic and metal locker doors
- Anti-pick and tamper resistant
- Lock is designed with an integrated rotation system. With the presence of a padlock the lock will remain locked, continuously spinning to avoid forced entry and tampering
- Ergonomic non-slip grip with a one step twist-and-pull operation
- The hasp accepts padlock shackles between 4mm to 8mm thick
- IP69K - Complete dust and water resistance
- Strong 100% metal for long-term heavy-use - no plastic components
- Accommodates doors 1-19mm thickness
- Standard cam offset 25mm (additional cam offsets available)
- Disinfected by misting with a liquid that is 70%-80% alcohol without damaging the surface of the lock
- **Immediate live response during business hours - no run around** (sos@keyless.co or 972.331.2770)

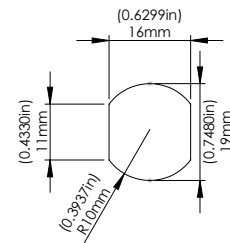
TOP VIEW



FRONT VIEW



DOOR ROUTING



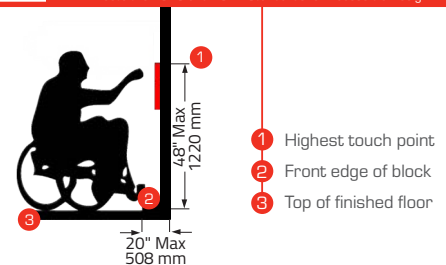
2010 & 2012 ADA STANDARDS FOR ACCESSIBLE DESIGN REQUIREMENTS



- 5% of lockers and their operable parts, the locks, must meet ADA specifications.
- Locks shall be operable with one hand.
- Shall not require tight grasping, pinching, or twisting of the wrist to operate.
- Shall have a force required to activate of 5lbs (22.2N) maximum.
- Locks shall be installed maximum 48.00"/1220mm from the floor surface.

ADA MODEL WITH INTEGRATED LEVER SERVING AS A PULL

Meets the 2010 and 2012 Standards for Accessible Design





KEYLESSH3

USER INSTRUCTIONS

TO LOCK

- Close the door.
- Turn the knob to the vertical position.
- Insert the padlock and secure.

TO UNLOCK

- Remove the padlock.
- Turn the knob back to the horizontal position.
- Open the door.

CLICK LINK:

<https://www.keyless.co/keylessH3/instructions/user/>

**SCAN QR CODE
TO VIEW USER
INSTRUCTION VIDEO:**

