



maars LIVING WALLS®

core®

Meet & Mute by Maars



Welcome to the world of Maars! Established in 1946, Maars is a global market leader in modular wall solutions, supported by our dedicated employees. We offer the most innovative integrated wall solutions covering markets such as healthcare, offices, airports, education, hospitality, industry, and retail.

Ongoing product development and specialization is based on growing insights and worldwide collaborations with dealer partners, customers and architects. The result: a wide range of solutions spanning conventional to high-end design, that meet certified fire ratings and acoustic performance benchmarks.

Maars Living Walls solutions enable you to be one with your environment, thanks to smart integration of all the latest technologies, materials and functions. Get inspired – discover more about Maars, our solutions, and global capabilities in this brochure.

■ [maarslivingwalls.com](https://maarslivingwalls.com)

core



M+R interior architecture | photography: Herman de Winar

# living walls



# the new workplace

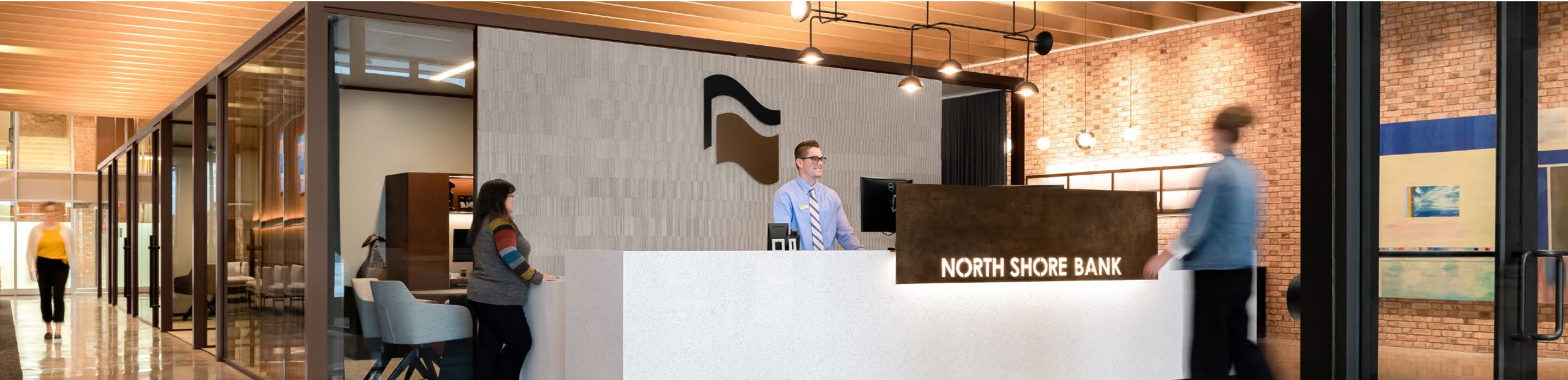
The way we work and collaborate has changed considerably over the years. We're working from home more often, and everyone being assigned their own desk in the office is no longer the norm. We're more flexible than ever - and we expect our workplaces to be, too. Times have changed, and there is a need for new solutions and innovative concepts and ideas including - or even only - at our usual place of work.

Core is responding to this development. Our aim? Offering employees a safe, pleasant and efficient place to work, discuss, connect, create, and perform. Core lets you shape the workplaces of the future to the dimensions, design, style and finish you want.



# anywhere

core®



Core can be quickly and flexibly integrated into any holistic plan of interior layout. This serves as the Core for your interior space. It is a powerful intersection between location and focus. Core is flexible and can easily be

tailored to meet any overall wall layout plan. It can be set up any way you like: any format, modern, stylish, abstract, surrealist, warm, efficient, warm, unifying, peaceful, relaxing, inspiring, productive. Maars provides the base,

the framework. You're the architect, interior specialist, designer, or client - so you decide the dimensions, wall, and finish you want allowing you to create the perfect working environment where people can concentrate

and are focused and healthy. A place to meet, discuss, and relax, thanks to outstanding design, high-quality materials and innovative production methods.



# any place

core®



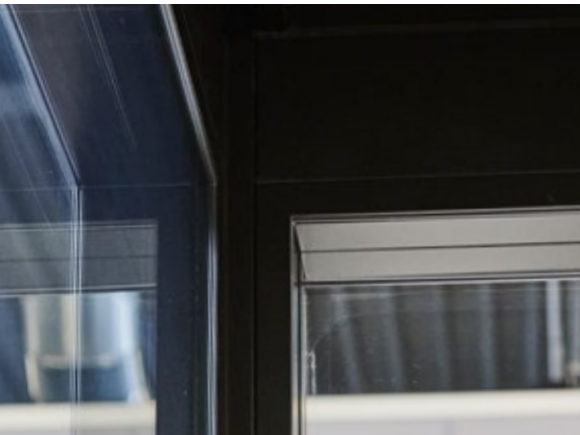
Core gives you access to an unrivalled range of options, dimensions, layouts, and features. Creating the perfect place for video calls, meetings, discussions or working and collaborating in a peaceful environment where you can focus, is quick and easy.



# visual & acoustic privacy

Modern offices and working environments using concrete, steel and glass create an identity, space, and transparency. At the same time, employees increasingly have a need for safety, peace and privacy, both in terms of visuals and acoustics. Confidential meetings and calls need spaces where peace, privacy, and focus are the norm. Core makes this possible.





## features & benefits

Core offers a number of flexible interior design options.

- Infinite combinations
- Quick and easy to use
- Can be used anytime, anywhere
- Outstanding visual and acoustic privacy
- Can be stretched to almost any desired format
- Sustainable: can be moved and reused

core



13/24



## endless possibilities

Core can easily be combined with almost all of our available wall systems, panel finishes and colours from the Maars range. Core also lets you choose your own ceiling. The raised plenum also allows for electricity, lamps, ventilation, HVAC and other fittings to be installed neatly out of sight. Bring together insight, design, and flexibility, with the unrivalled quality and adaptability of Maars.



Core Metaline



Core Panorama String²



Core Panorama



Core Horizon Carré



Core String² Panorama



Core Panorama String²



Core String² M923.



Core String²



Core Horizon Carré





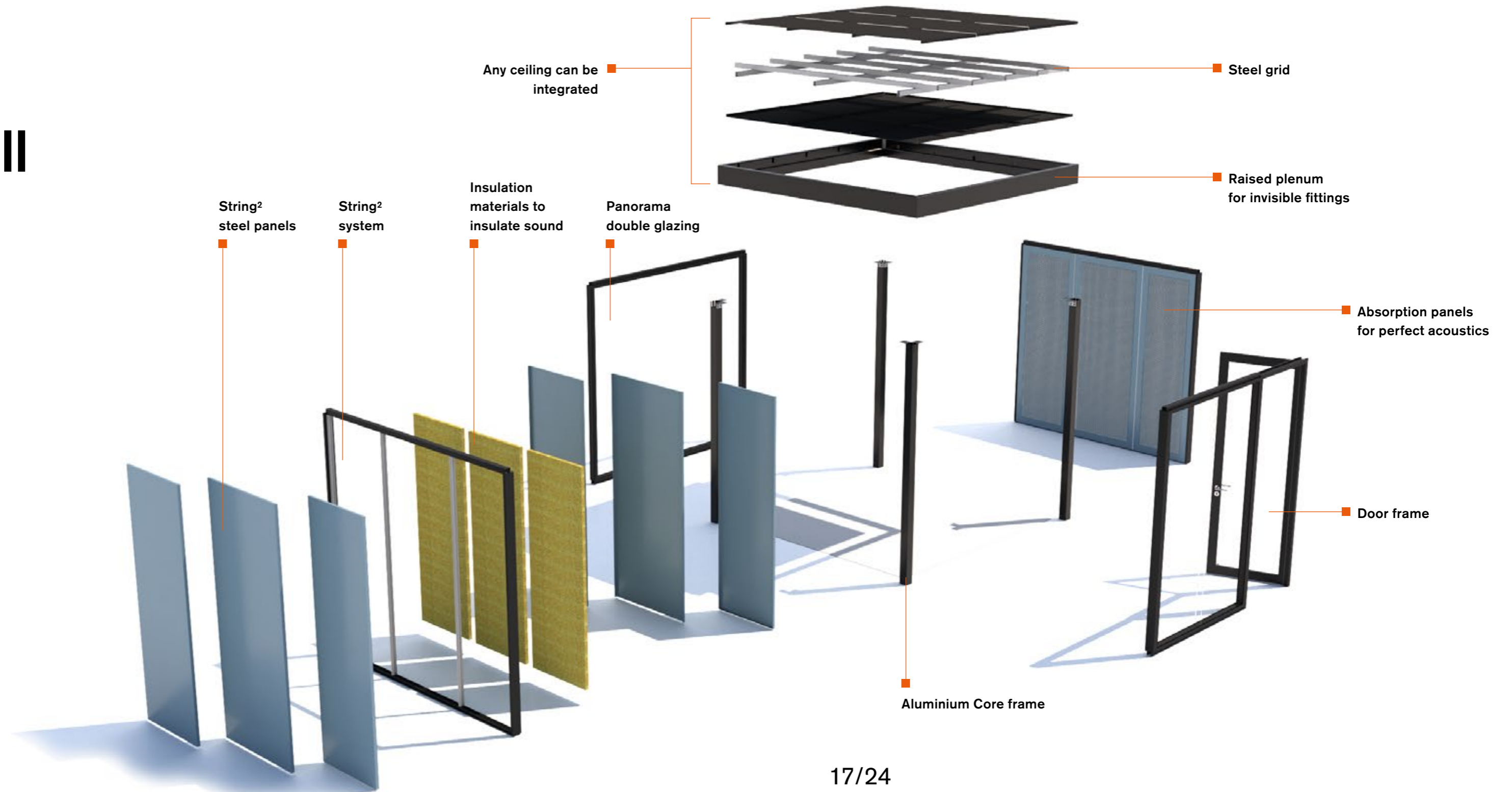
# Your Core, Your Call

Core is made up of a high-quality frame with four vertical aluminium shafts and four horizontal ones. The ceiling installation is a strong steel grid which rests on top of the frame. The grid has a clean finish with a plate that matches the frame finish. The plenum offers a number of practical benefits. It allows for technical installation, ventilation and air conditioning to be integrated invisibly.

The frame, ceiling and plenum are the basis - the core of the area. You decide what goes on it. All Maars walls and doors can be integrated with Core. You can select a Maars ceiling or use one made by a third party, which can be used just as easily. You can go for maximum transparency, perfect privacy, or the best of both worlds: Core has it all.



core



# sustainability

Using Core also allows you to build sustainably in line with the principles of the circular economy. All of the materials we use are reusable, both in the same Core or in another one, as well as when setting up a new project. Stay flexible, and keep pace with demands that these changing times are placing on workplaces, with Core.





core

## lineaCube

Maars offers a range of Room-in-Room options. Core offers endless possibilities, and the lineaCube is famous for its design. Modern, open, highly transparent spaces impact privacy, sound insulation and sound absorption. The lineaCube offers as much acoustic privacy as you could want, and a perfect working environment. Combinations involving blinds, privacy glass and closed walls are available as well as completely transparent walls.

The Maars lineaCube is unique, with a minimalist design and structure which is entirely self-supporting, including a coffered ceiling and double glazing. It has perfect sound insulation and absorption. The lineaCube is a self-contained area with its own air ventilation, acoustic insulation and absorption, power, data, audio, and lighting integrated into the ceiling.



create and design interiors  
beyond your imagination

Rendered with maars 4D software



Maars 4D gives you intelligent, highly visual and intuitive room planning software at your disposal, making it easier to specify and sell products.

visit [www.maarslivingwalls.com](http://www.maarslivingwalls.com)  
to learn the possibilities



# committed to circularity

For Maars, people's wellbeing is essential in every area. We're always looking for sustainable, responsible solutions and researching new production technologies. Reduce, reuse and recycle is embedded in our company philosophy, from environmentally-friendly coatings to CO2 offsetting and 5S lean manufacturing. Or products can help you improve your BREEAM and LEED scores. We've established an integrated operational management system for all critical quality, environmental and

safety processes to give us total control of our quality, environmental, and health and safety policies. Considering the entire production process in detail allows us to produce more efficiency while limiting our energy consumption. Maars has an ongoing commitment to innovation and the circular economy, recognised with a Cradle to Cradle™ Bronze-certificate\* for all of our wall systems and ISO-9001/ISO-14001 certification\*.

core



\*Ask for our certified products.

## technical specifications

### SIZES

- Base values
- Max height = 3048mm
- Minimal width = 1200mm
- Maximal width = 4000mm
- Repeat core endlessly – no maximum width

### MATERIAL

- Aluminum post and beams - vertical and horizontal
- Steel studs for ceiling grid
- Finish ceiling bottom either steel perforated panels or third party material (not delivered by Maars)
- Finish ceiling top either OSB or steel panels

### CEILING

- Ceiling basic
- Total height 200mm
- Steel studs 81mm
- Covered with 201 mm plate in powdercoat finish
- Option OSB or Steel plates on top of Core basic ceiling
- No ventilation, no bottom of ceiling

### Ceiling slim

- Total height 100mm
- Reinforced ML-100 studs
- Perforated steel bottom ML-100 panels of
- Core slim ceiling
- Standard equipped with ventilation

Ceiling can also be left open

### INTEGRATIONS

All Maars walls can be integrated in Core. 3 sides per core must be filled with Maars walls, Horizon, String², Panorama, Metaline, Ialinea, Styleline; M923. as 4th wall. Module width 600, 900, 1200mm (or custom) – depending on sizes Core

Doorframe: aluminium or steel frames  
 Door leaves provided with 3 hinges: Wide range of doors from 40 mm to 100 mm double glazed doors.  
 Check our doors range for further options.

### ACOUSTICS

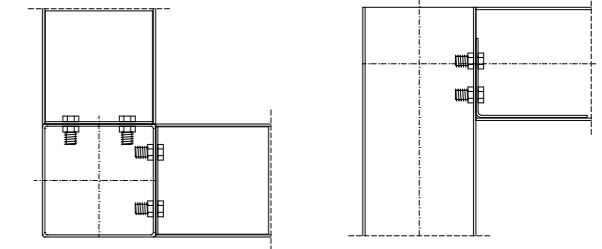
All Maars walls are possible:  
 Single glazed walls up to  $R_w = 39\text{dB}$  / 39 STC  
 Double glazed walls up to  $R_w = 50\text{dB}$  / 51 STC  
 Solid walls up to  $R_w = 53\text{dB}$  / 53 STC

Door elements (door tested in doorframe)  
 Steel door: up to  $R_w = 44\text{dB}$ , STC=44  
 Glass door: up to  $R_w = 41\text{dB}$ , STC=41  
 \* values applicable on individual walls

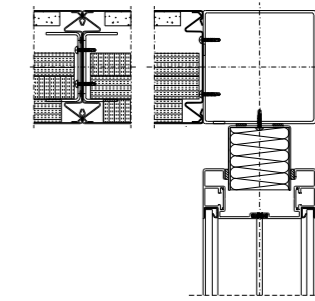
### MAARS LIVING OPTIONS

Ventilation in ceiling is standard in ceiling type slim.

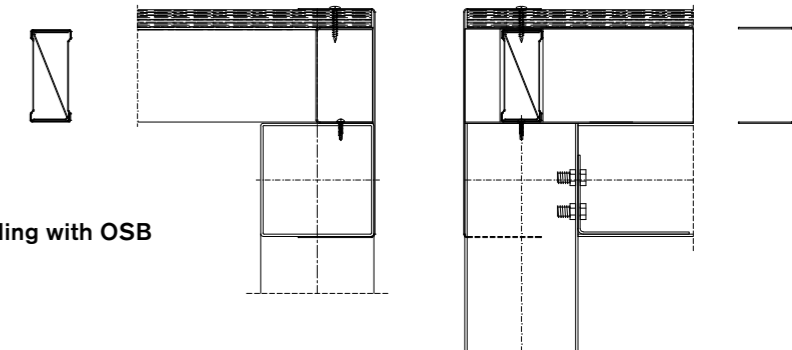
### without ceiling



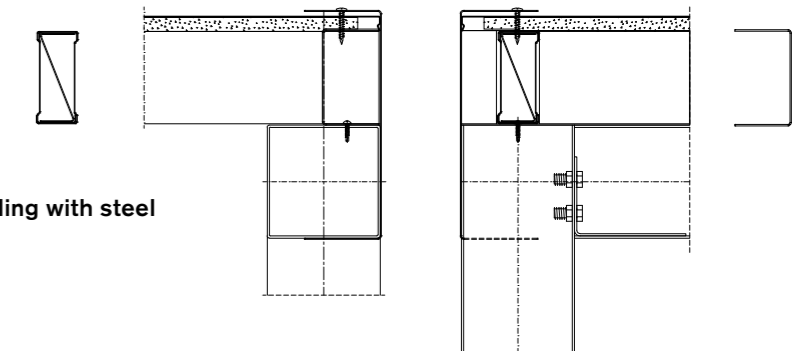
### slim ceiling



### basic ceiling with OSB



### basic ceiling with steel



# core®

## products

Styleline  
Metaline  
String<sup>2</sup>  
Panorama  
Horizon  
laline  
lineacube  
Doors  
Living Options  
M923.

## expertise

Office  
Care & Cure  
Education  
Revitalisation  
Airport  
Hospitality  
Industrial  
Automotive



maars LIVING WALLS®

Newtonweg 1, PO Box 1000  
3840 BA Harderwijk  
The Netherlands

T +31 (0)341 46 52 11  
info@maars.nl  
www.maarslivingwalls.com