

# IMOLA

TIMBER GLAZED PARTITIONS

PRODUCT SUMMARY



**allied**.ie





# IMOLA

TIMBER GLAZED PARTITIONS

UCD Tierney Building, Belfield, Dublin



allied.ie



## About the System:

Imola has mastered the challenge of achieving aesthetic design combined with the performance requirements of Fire, Acoustics and Structural Stability. Standard dimension components are manufactured to project specific finishes enabling the client design team to create a visually unique workspace. The Imola Timber/ MDF composite frame demountable and relocatable partition system provides a comprehensive range of standard elevations comprising solid, door and single centre, single offset, or double-glazed modules.

## Finishes:

An extensive choice of veneers or paint finishes available.

Application of clear U/V lacquer or Class O Fire Rated Lacquer

Applied by computer-controlled finishing lines

Tinted lacquer, varied gloss levels and paint finishes available

## Product facts:

FSC (Forest Stewardship Council) Certified

Glazed Mullion or Glass to Glass

Partition Height: Up to 3000mm  
Module Width: Up to 1200mm

Dry Joint Gasket or Silicon

## Acoustics:

Double Glazed:  
12.8mm & 16.8mm – Rw 54dB  
10mm & 12.8mm – Rw 51dB  
10mm & 12mm – Rw 49dB

Single Offset & Central Glazed:  
From Rw 38dB up to Rw 41dB

## Fire:

Tested and certified by IFC Group, specialist fire safety consultancy.

Integrity / Insulation performance:  
EI 30/0 - EI 30/30  
EI 60/0 - EI 60/30 - EI 60/60

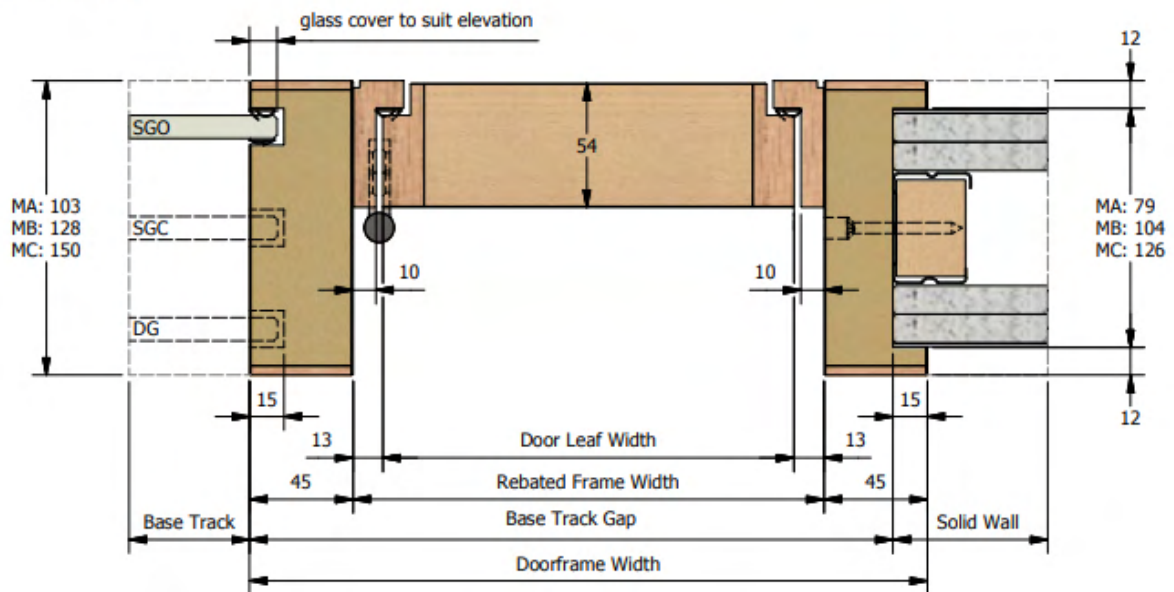
Door – Standard door and frame  
Solid – To dry wall manufacturer spec



HSE Jervis Street, Dublin 1

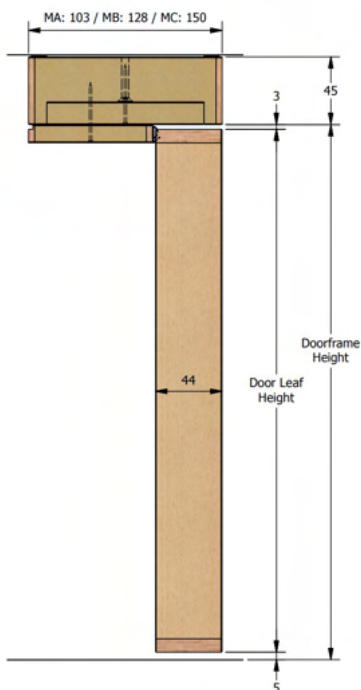
## Junction Details

### Flush Door-Sets Horizontal Section

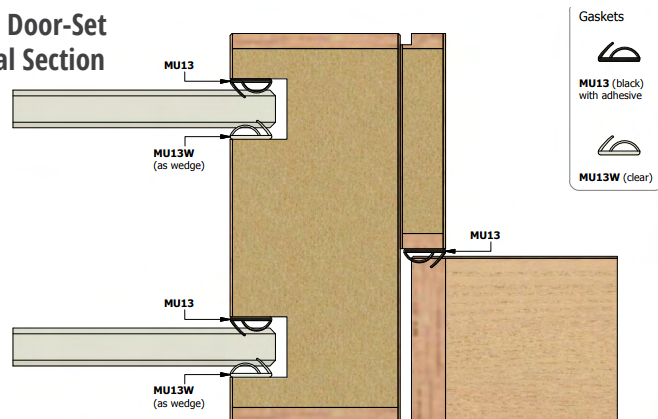


### Standard Door-Set Vertical Section

Head and Base (1:3)

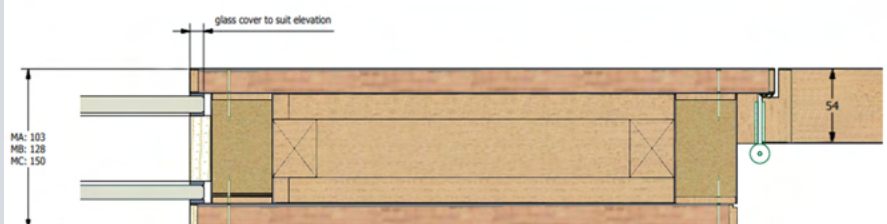


### Standard Door-Set Horizontal Section



Note: optionally, silicone can be used instead of MU13/MU13W gaskets (not inside DG cavity).

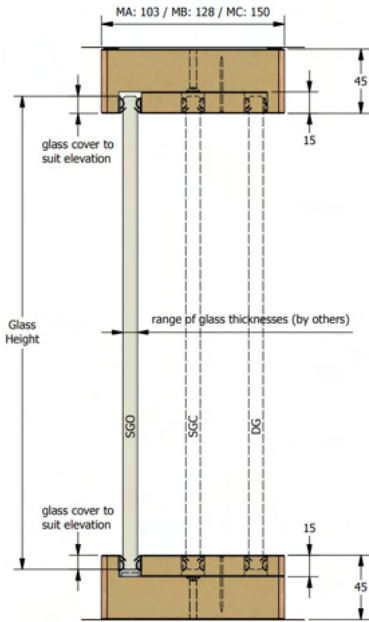
### Tech Panel or Solid Panel Horizontal Section



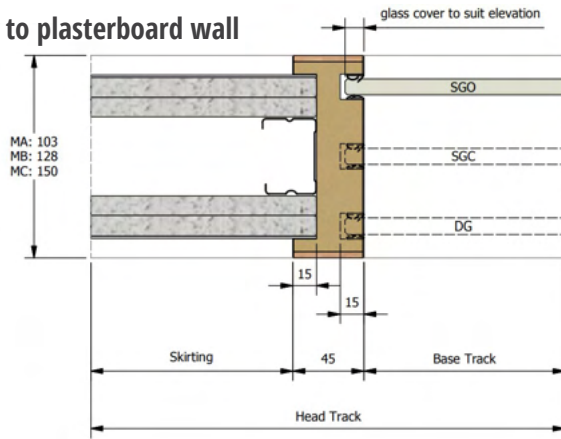
## Junction Details

### Glazing Options

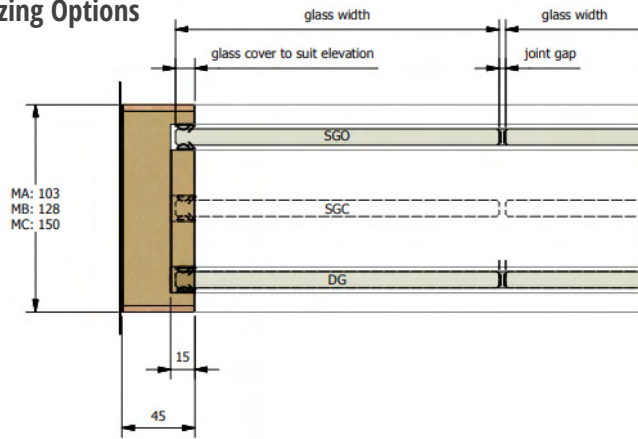
Head and Base (1:3)



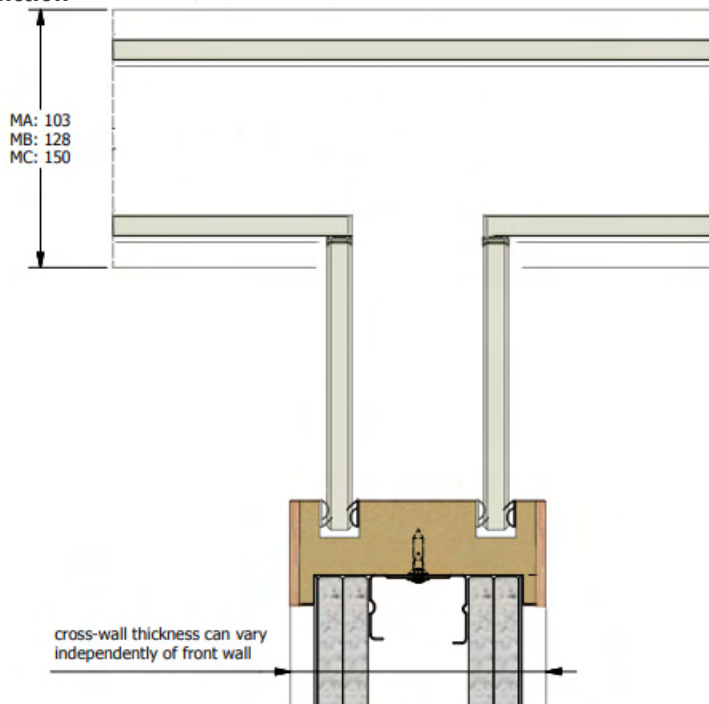
### Glazing to plasterboard wall



### Glazing Options



### Three Way Glazed Junction



## Product Overview

|                              |  |
|------------------------------|--|
| System Type                  | Timber Frame Glazed Partitions, Single glazed & Double Glazed  |
| Head Detail                  | 45mm frame with solid structural depths of 75mm (MA), 100mm (MB) and 122mm (MC).   |
| Base Detail                  | 45mm frame with solid structural depths of 75mm (MA), 100mm (MB) and 122mm (MC).   |
| Door Options                 | <ol style="list-style-type: none"> <li>1. Standard door and frame</li> <li>2. Flush face door and frame</li> <li>3. Concealed doorframe with sequentially matched veneer panel and door</li> </ol>   |
| Glass Thickness              | Single and double glazed:<br>Minimum thickness 10mm toughened glass, maximum thickness 16.8mm acoustic laminated glass. Thickness subject to panel width, height and acoustic rating.  |
| Maximum Screen Height        | Partition Height up to 3000mm. Module width up to 1200mm   |
| Glass to Glass Joint Options | Dry joint gasket or optional silicon   |
| Acoustic Rating              | <p>Double Glazed:</p> <p>10mm &amp; 12mm – Rw 49dB<br/>10mm &amp; 12.8mm – Rw 51dB<br/>12.8mm &amp; 16.8mm – Rw 54dB</p> <p>Single Offset &amp; Central Glazed:<br/>From Rw 38dB up to Rw 41dB</p>   |
| Fire Rating                  | <p>Tested and certified by IFC Group</p> <p>Integrity / Insulation performance:<br/>EI 30/0 - EI 30/30<br/>EI 60/0 - EI 60/30 - EI 60/60</p> <p>Door – Standard door and frame 30 minute &amp; 60 minute Fire Rated<br/>Solid – To dry wall manufacturer spec - 30 minute &amp; 60 minute Fire Rated</p> |