



Allied Ireland, Unit 24, Tolka Valley Business Park,
Ballyboggan Road, Glasnevin, Dublin 11.
Phone: 8532222 Fax: 8603013 Email: info@allied.ie Web: www.allied.ie

Design & Production: Social Creative 01273 606390
Photography: Andrew Perry, ARV Studios 01273 62246



SUSTAINABLE - adj. 1. causing little or no damage to the environment and therefore able to continue for a long time

SUSTAINABILITY - Whilst creating an enviable working environment the Ls Partition and Furniture design process incorporates the topical issue of sustainability in making more efficient use of materials in product manufacture and hence the building construction process. The LsWorkwall bi-panel partition system manufactured in group UK factories:-

- Minimises waste through the use of precision materials with a structured approach to the disposal of any waste materials generated
- Reduces on-site fabrication, hazards and waste
- Enables through sound project planning the reduction of deliveries to site
- Provides full product trackability, thus identifying materials used for any life cycle assessment of the building
- As a demountable / relocatable system is re-usable in a company's building portfolio
- On reaching the end of useful life the modules are designed for disassembly enabling the materials of aluminium, steel, plastic, glass, timber and insulation to be recovered from site and entered into the relevant industry's recycling programme

The group factories have third party assessment and accreditation for ISO14001 (Environmental Management System) and FSC (Forestry Stewardship Council) and support local communities providing employment opportunities in factory conditions with a strong emphasis on health and safety management (ISO18001)



Lifestyle Partitions and Furniture Ltd, as part of SIG PLC (Commercial Interiors Division), sources all veneer and MFC components from group factories which have been assessed by BM Trada Certification Ltd for FSC Chain of Custody Certification.

lifestyle



DESIGNED FOR DISASSEMBLY
MODULAR DEMOUNTABLE
RELOCATABLE RE-USABLE
RECYCLABLE COMPONENTS
FUTURE SUSTAINABILITY

Ls90 partitioning

Synonymous with style, performance and versatility, Ls90 has been specifically designed to meet the workplace needs of the most dynamic of organisations. It has been engineered to accommodate future change, whether it is relocating an individual or entire suite of offices, to simple upgrading a boardroom for improved acoustic performance.

Ls90 steel



Ls90 glass



Ls90 veneer



Ls90

flexibility

The bi-panel characteristics of Ls90 facilitates speed of build with quality-controlled factory prepared elements. Modules are interchangeable from glass to solid without disturbance to adjacent elements. Its hung panel design, with recessed base and head incorporating $\pm 25\text{mm}$ deflection, creates a true floating panel effect with no visible framing on solid elements. Ls90's unique doorframe, junctions and flush panel-to-panel elements enhance this minimal aesthetic.

DESIGNED FOR DISASSEMBLY
MODULAR DEMOUNTABLE
RELOCATABLE RE-USABLE
RECYCLABLE COMPONENTS
FUTURE SUSTAINABILITY



Ls 90



flexibility

DESIGNED FOR DISASSEMBLY
MODULAR DEMOUNTABLE
RELOCATABLE RE-USABLE
RECYCLABLE COMPONENTS
FUTURE SUSTAINABILITY

Ls90

strength

In the high transit areas of corridors or public spaces, the strength of the powder coated steel panel withstand excessive wear and tear. An alternative write-on and dry-erase magnetic surface is a practical option for meeting, conference and training rooms.

Steel performance:

- Structural
Severe duty
- Fire
1 hour
- Propagation/Spread of flame
Class Q1
- Acoustic
45dB (hw)



Ls 90

strength

DESIGNED FOR DISASSEMBLY
MODULAR DEMOUNTABLE
RELOCATABLE RE-USABLE
RECYCLABLE COMPONENTS
FUTURE SUSTAINABILITY

Ls 90

strength





DESIGNED FOR DISASSEMBLY
MODULAR DEMOUNTABLE
RELOCATABLE RE-USABLE
RECYCLABLE COMPONENTS
FUTURE SUSTAINABILITY

Ls90

streamlined

A true floating panel effect is the consequence of choosing Ls90's pre-vinylated MDF option. With no requirement for cover trims a truly streamlined effect is attained.

Pre-vinylated MDF performance:

-  Structural
Escape duty
-  Fire
1 hour
-  Propagation/Spread of flame
Class 0/1
-  Acoustic
42dB (Rw)



Ls90

streamlined

DESIGNED FOR DISASSEMBLY
MODULAR DEMOUNTABLE
RELOCATABLE RE-USABLE
RECYCLABLE COMPONENTS
FUTURE SUSTAINABILITY

Ls 90



streamlined

DESIGNED FOR DISASSEMBLY
MODULAR · DEMOUNTABLE
RELOCATABLE · RE-USABLE
RECYCLABLE COMPONENTS
FUTURE SUSTAINABILITY

Ls90

streamlined





DESIGNED FOR DISASSEMBLY
MODULAR DEMOUNTABLE
RELOCATABLE RE-USABLE
RECYCLABLE COMPONENTS
FUTURE SUSTAINABILITY

Ls90

natural

The natural beauty of veneer characterizes executive corridors and offices. The vast array of commercially available veneers, which may in turn be co-ordinated with doors and furniture, makes certain that every workplace is distinctive.

Veneer performance:

-  Structural
Minimum 24h
-  Fire
1 hour
-  Propagation/Spread of flame
Class 0/1
-  Acoustic
43dB (RW)



Ls90

natural



DESIGNED FOR DISASSEMBLY
MODULAR DEMOUNTABLE
RELOCATABLE RE-USABLE
RECYCLABLE COMPONENTS
FUTURE SUSTAINABILITY



Ls 90

natural

DESIGNED FOR DISASSEMBLY
MODULAR DEMOUNTABLE
RELOCATABLE RE-USABLE
RECYCLABLE COMPONENTS
FUTURE SUSTAINABILITY

Ls 90

natural

DESIGNED FOR DISASSEMBLY
MODULAR · DEMOUNTABLE
RELOCATABLE · RE-USABLE
RECYCLABLE COMPONENTS
FUTURE SUSTAINABILITY

Ls90

transparency

The transparency of glass creates an illusion of space. This combined with Ls90's minimalist frame and glazed panels produces a smooth, elegant option for the division of any office space. The modules are available with integral Venetian blinds or manifestation, to any design, which is applied to the inside of the glazed panel.

Glass performance:

-  Structural safety
-  Fire 1/2 hour
-  Acoustic 43dB (RW)



Ls 90

transparency

DESIGNED FOR DISASSEMBLY
MODULAR · DEMOUNTABLE
RELOCATABLE · RE-USABLE
RECYCLABLE COMPONENTS
FUTURE SUSTAINABILITY

Ls 90

transparency

DESIGNED FOR DISASSEMBLY
MODULAR DEMOUNTABLE
RELOCATABLE RE-USABLE
RECYCLABLE COMPONENTS
FUTURE SUSTAINABILITY

Ls90



Double glazed door with integral door closer

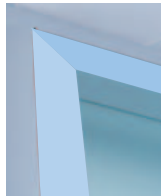


Exterior 135 degree solid to glazed

Vinyl panel to glazed module with integral blind



Glazed to wall abutment



Ls90 IN DETAIL

To access comprehensive technical details about Ls90 please visit lifestylepartitions.com. Here you will be able to view and download information about product performance including fire, sound, structural and mechanical data; detailed junction drawings; specifications that conform to NBS guidelines and a system method of build statement.



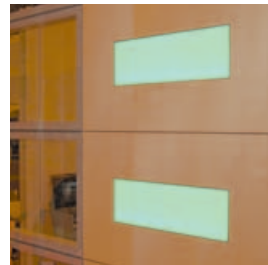
In-line glazed to solid



90 degree corner doorset to solid



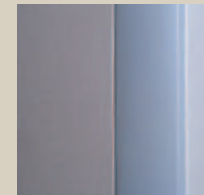
Full height 2 piece doorframe



LED light block in veneered panel

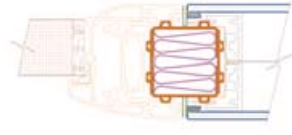


Internal 'Y' junction glazed to solid

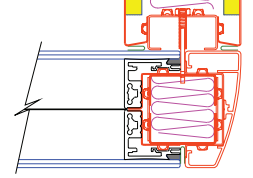
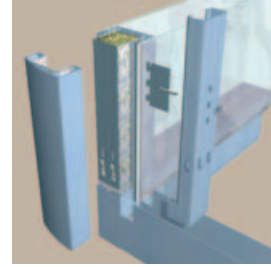


90 degree corner solid to solid

DESIGNED FOR DISASSEMBLY
 MODULAR DEMOUNTABLE
 RELOCATABLE RE-USABLE
 RECYCLABLE COMPONENTS
 FUTURE SUSTAINABILITY

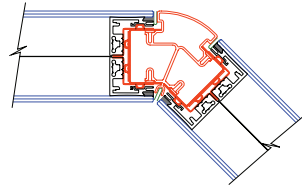
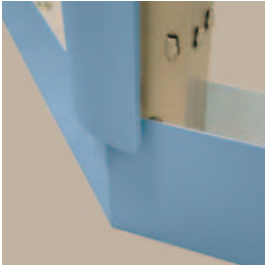


Full height doorframe
head detail

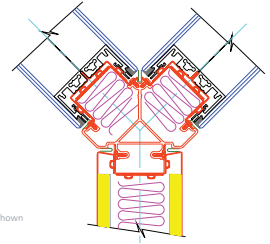


90 degree corner

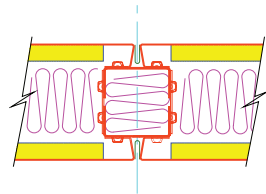
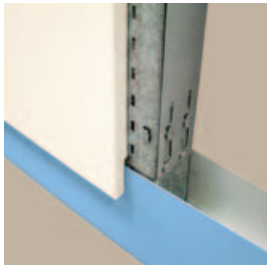
Ls90 NUTS & BOLTS



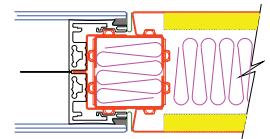
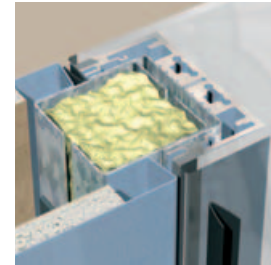
135 degree corner
base section



"Y" junction shown
at head



Base detail showing
internal steel stud



Glazed to steel
mullion detail

colours

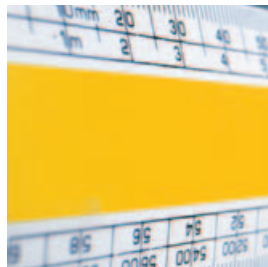
To provide a different texture to corridors or office walls, powder coated MDF is the solution. Choose from the vast spectrum of RAL or BS colours to reinforce corporate identities or produce individual schemes through unique colour selection.



- Powder coated MDF performance:
- Structural
Shops, Dry
 - Fire
1 hour
 - Propagation/Spread of flame
Class D1
 - Acoustic
4208 (low)

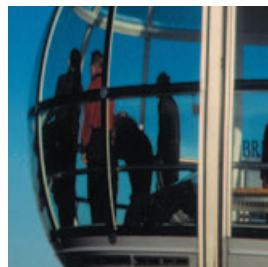
size matters

1500mm module widths are available in glazed, steel, veneer, laminate and MDF panels to match specified ceiling grid. The size of panels automatically reduces the number of vertical lines in longer runs for the streamlined look.



why not

High resolution digital imagery can be applied to a solid or glass panel utilising Lifestyle's advanced digital colour printers. The aggressive adhesion technology of the inks utilised is able to withstand the use of standard office cleaning solution thus retaining a fade free high resolution.



- DESIGNED FOR DISASSEMBLY
MODULAR DEMOUNTABLE
RELOCATABLE RE-USABLE
RECYCLABLE COMPONENTS
FUTURE SUSTAINABILITY

lifestyle

LIFESTYLE DESIGN TOOLBOX

The Lifestyle Design Toolbox has been developed to offer flexibility in specification and the ability to deliver bespoke solutions to a diverse range of business requirements.

Ls90 is just one of the extensive range of products in the Lifestyle Design Toolbox which allows businesses to respond to the challenging demands of the modern working environment and to achieve their objectives.

lifestylepartitions.com

Ls Work wall



Ls Bench



Ls90



Ls65

